

CATALOGUE

Retail Systems and Design Solutions

WELCOME

We have been in business 69 years in Australia, and 8 years in the United States. Tasman Group PR is a very unique company. We assist our clients with services that enable decision makers to evaluate a fixture or display project in the very early stages of development, design, from sketch to final drawings, value engineering, pricing and fixture prototype development.

Tasman Group PR was created on the foundation of hard work while listening very closely to the client's needs. You design it.... we'll value engineer it and build it.

Melbourne is home for our Australia operation and Los Angeles is home for our United States operation. Both of which are supported by our more than 2,500,000 sq. ft. of manufacturing facilities in both Australia and Asia. Los Angeles is a major transportation hub allowing us to serve customers throughout North America.

SOME OF OUR VALUED CUSTOMERS INCLUDE:



BOSCH



**charlotte
russe®**



PAC SUN

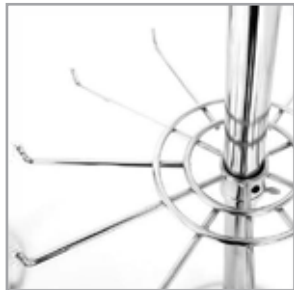


TILLYS



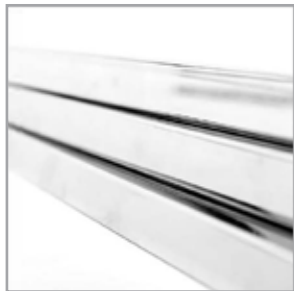
**West
Marine®**

CONTENTS



RACKS & ACCESSORIES

A
1-22



OUTRIGGERS & WALL STANDARDS

B
1-6



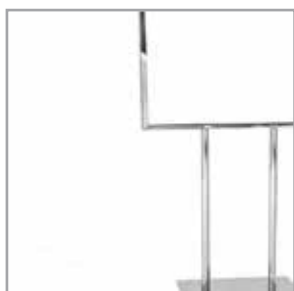
BRACKETS & ACCESSORIES

C
1-12



HANGRAILS & ACCESSORIES

D
1-8



METAL SIGN HOLDER & ACCESSORIES

E
1-11

CONTENTS



GRID PANELS & ACCESSORIES

F
1-16



SLATWALL ACCESSORIES

G
1-12



BINNING CONNECTORS

H
1-2



ACRYLIC SIGN HOLDERS

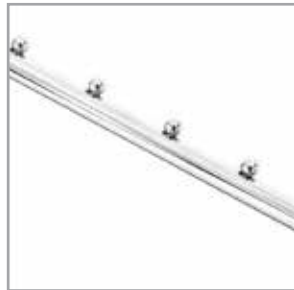
I
1-5



COUNTER TOP DISPLAYERS

J
1-3

CONTENTS



**PEGBOARD &
ACCESSORIES**

K
1-2



**STACKING BASKETS
& DUMP BINS**

L
1-5



**METAL WIRE
SHELVING SYSTEM**

M
1-4



HANGERS

N
1-5



**WIRE BASKETS &
SHELVES**

O
1-4

CONTENTS



CARTS

P
1-6



LOCKERS

Q
1-5



FOLDING
WARDROBES

R
1-3



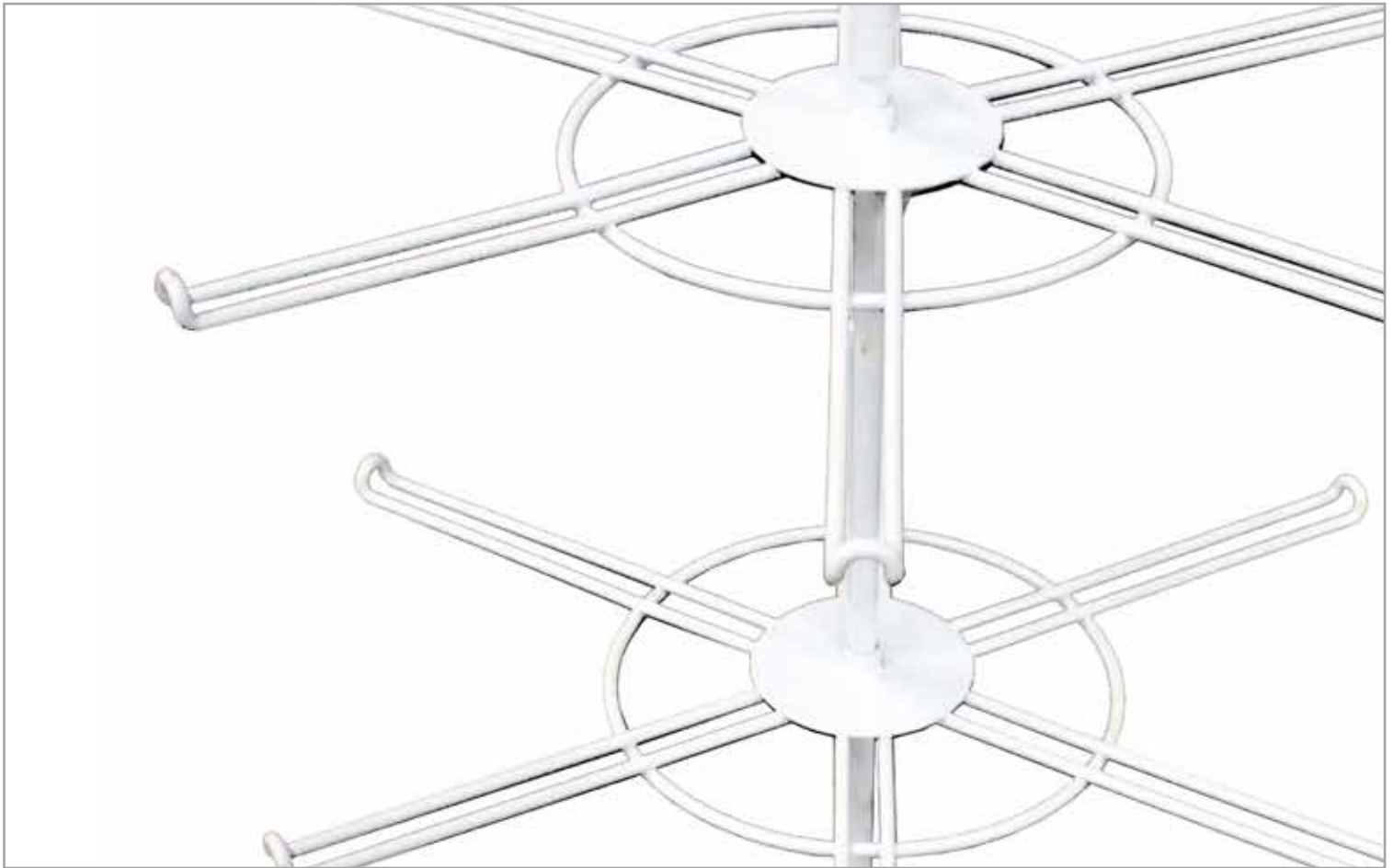
MANNEQUINS

S
1-4



CUSTOM
PROJECTS

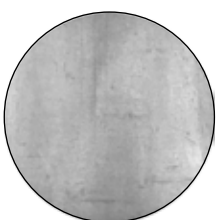
T
1-5



RACKS & ACCESSORIES

- TWO WAY RACKS
- FOUR WAY RACKS
- SUPER FOUR WAY RACKS
- DISPLAY ARMS
- ROUND RACKS
- DOUBLE HANGRAIL RACKS
- ACCESSORIES RACKS
- GARMENT RACKS
- CASTERS
- SHOE RACKS AND ACCESSORIES

AVAILABLE FINISHES



RAW METAL



SATIN CHROME



CHROME



WHITE POWDER COAT



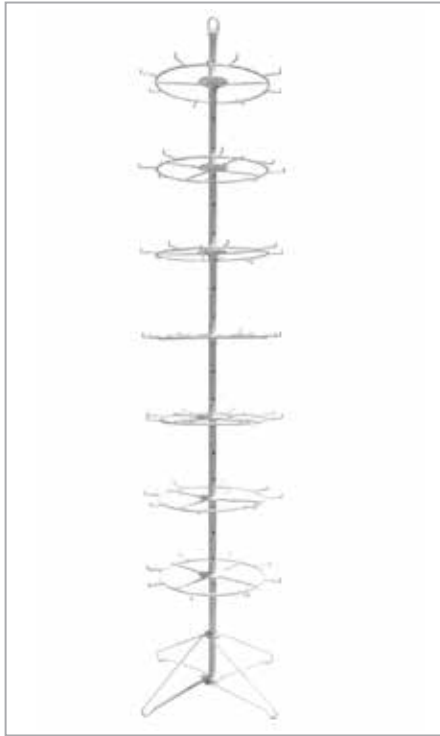
BLACK POWDER COAT

FEATURED RACKS & ACCESSORIES



19720

2-Way Rack with 2 Adjustable straight Arms



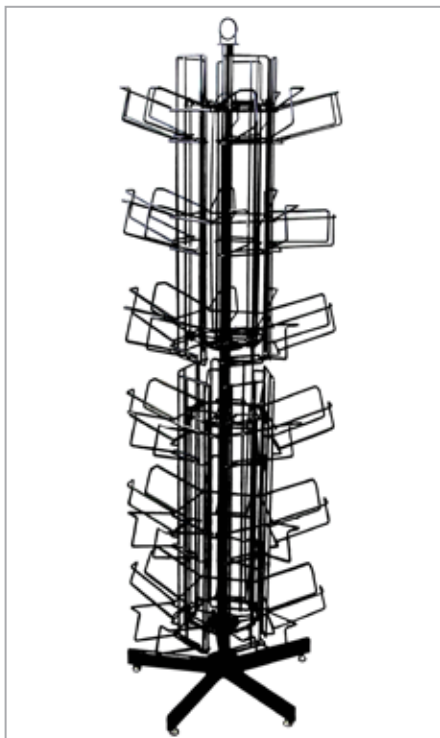
14041-W

48-Single peg 6-Tier spinner.
72"H X 26"W.



14050

6 Tier; 30 Slots Utility Spinner for CDs/DVD's



14043

Counter top 12 - loop peg spinner.
5" long loop pegs per independently rotating tier. 14" dia. base. Will display items up to 4"W x 7"H. "coil signholder" is included. Measures: 17"Dia. x 22"H.

**0100**

Two straight arms - square tubing.

**0101**

One straight and one slant arm with balls - square tubing.

0102

Two slant arms with balls - square tubing.

**0103**

Two slant arms with hooks - square tubing.

0104

Two straight arms - rectangular tubing.

**0105**

One straight and one slant arm with balls - rectangular tubing.

0106

Two slant arms with balls - rectangular tubing.

Note: Heavy duty 15" x 12" base. Single upright of 1" x 2" rectangular tubing.
Arms are adjustable every 3" from 48" to 72".

0200

Two straight arms - square tubing.

**0201**

One straight and one slant arm with balls - square tubing.

0202

Two slant arms with balls - square tubing.

**0203**

Two slant arms with hooks - square tubing.

0204

Two straight arms - rectangular tubing.

**0205**

One straight and one slant arm with balls - rectangular tubing.

0206

Two slant arms with balls - rectangular tubing.

**0207**

One bow arm and one slant arm with balls - square tubing.

0208

One bow arm and one straight arm - square tubing.



Note: Heavy duty 15" x 12" base. Upright of two 1" square tubing.
Arms are adjustable every 3" from 48" to 72".

**0400**

Two straight arms and two slant arms with balls - rectangular tubing.

**0401**

Four straight arms - rectangular tubing.

**0402**

Four slant arms with balls - rectangular tubing.

**0403**

Four straight arms - square tubing.

**0404**

Two straight arms and two slant arms with balls - square tubing.

**0405**

Four slant arms with balls - square tubing.

**0406**

Four slant arms with hooks - square tubing.

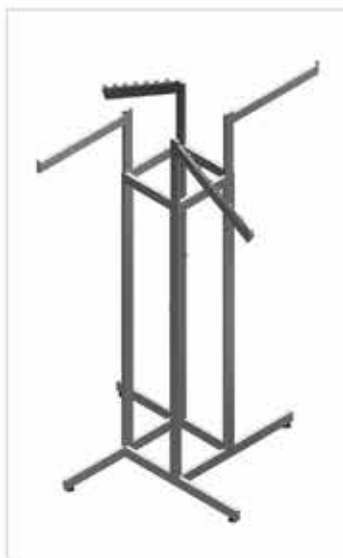
**0408**

Topper for four way rack.

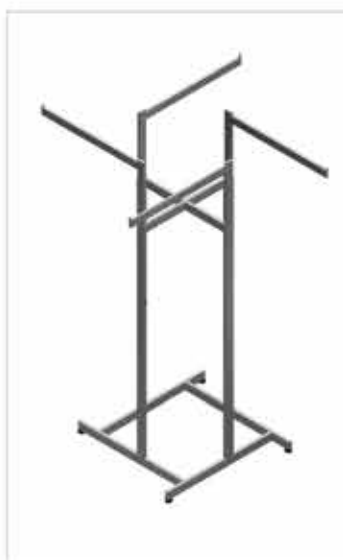
Note: Base of 1" square tubing with levelers. Arms are adjustable every 3" from 48" to 72".

0500

Two 16" straight arms & two 16" slant arms with balls - rectangular tubing.

**0501**

Four 16" straight arms - rectangular tubing.

**0504**

Four 22" straight arms - rectangular tubing.

0505

Two 22" straight arms and two 22" slant arms with balls - rectangular tubing.

**0506**

Four 22" straight arms - rectangular tubing.

0507

Four 22" slant arms with balls - rectangular tubing.

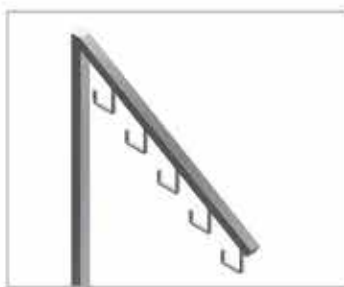
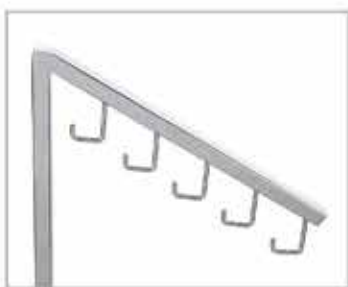
Note: Base of 5/8" x 1-5/8" rectangular tubing with levelers. (exclude: #0506 and #0507 which is in 1" square tubing). Arms are adjustable every 3" from 48" to 72".

**0600**

16" straight arm - square tubing.

**0601**

16" slant arm with 7 balls - square tubing.

**0602**

16" slant arm with 5 hooks - square tubing.

**0603**

16" straight arm - rectangular tubing.

**0604**

16" slant arm with 7 balls - rectangular tubing.

0605

Bow arm with rectangular tubing.

**0606-12**

12" straight twist-on arm - square tubing.

**0606-16**

16" straight twist-on arm - square tubing.

**0607**

16" slant twist-on arm with 7 balls - square tubing.

**0608**

16" slant twist-on arm with 5 hooks - square tubing.

**0609**

12" straight twist-on arm - rectangular tubing.

**0610**

16" straight twist-on arm - rectangular tubing.

**Note:** Fits 1" square tubing uprights.

**0700**

36" diameter folding round rack with hangrail
1-1/4" diameter round tubing.

0701

42" diameter folding round rack with hangrail
1-1/4" diameter round tubing.

**0702**

36" diameter folding round rack with hangrail
1/2" x 1-1/2" rectangular tubing.

0703

42" diameter folding round rack with hangrail
1/2" x 1-1/2" rectangular tubing.

**0704**

36" add on hangrail - round tubing.

0705

42" add on hangrail - round tubing.

0706

36" add on hangrail - rectangular tubing.

Note: Base of 1" square tubing with levelers, legs are adjustable every 3" from 48" to 66" high. Racks will accept 5/16" threaded casters with 1" stem (sold separately).

0708

4 way topper for round racks.

**0709**

30" grid topper, 3" lip (fits all #0700 series round racks).

**07-PINS**

Glass shelf support for #0700 series round racks.



**0802**

36" diameter tri-level rack.

0803

42" diameter tri-level rack.

Note: Base and uprights of 1" x 2" rectangular tubing. Hangrails of 1/2" x 1-1/2" rectangular tubing, adjustable every 3" from 48" to 72".

**0810-30**

30" diameter collapsible revolving rack with 1" round tubing ring.

0810-36

36" diameter collapsible revolving rack with 1" round tubing ring.

0811-30

30" diameter collapsible revolving rack with 1/2" x 1-1/2" rectangular tubing ring.

0811-36

36" diameter collapsible revolving rack with 1/2" x 1-1/2" rectangular tubing ring.

Note: Racks will accept 5/16" threaded casters with 1" stem (sold separately).

0900

60" hangrail of 1-1/4" diameter round tubing. Frame made of 1" square tubing, 22"W x 49"L with levelers. Arms height are adjustable every 3" from 48" to 72".

**0901**

Same as #0900 with "Z" bar construction.

**0901-ZB**

"Z" brace for #0900 rack.



Note: Racks will accept 5/16" threaded casters with 1" stem (sold separately).

**0902**

Same as #0900 with "V" bar construction.

**0903-48C**

48" add-on hangrail for 2nd tier - separate clamps.

0903-60C

60" add-on hangrail for 2nd tier - separate clamps.

0903(A)-60

60" add-on hangrail for 2nd tier - welded clamps.

Note: Racks will accept 5/16" threaded casters with 1" stem (sold separately).

0904-24C

24" add-on hangrail for #0900.

**0904-36C**

36" add-on hangrail for #0900.

0904-48C

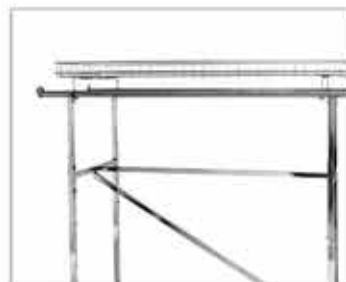
48" add-on hangrail for #0900.

0904-60C

60" add-on hangrail for #0900.

0905

Grid basket, 60" x 24" for #0900 racks.

**0906**

End gable twist-on bracket.

**0907**

Hangrail connector.



Note: Racks will accept 5/16" threaded casters with 1" stem (sold separately).

**1002**

Two tier handbag display. 1" square tubing base with levelers. Four 16" slant arms with 5 hooks and four 16" twist-on slant arm with 5 hooks.

**1003**

Spiral rack. 18" round base, 67" high with 29 balls. Threaded top for sign holder.

**1004**

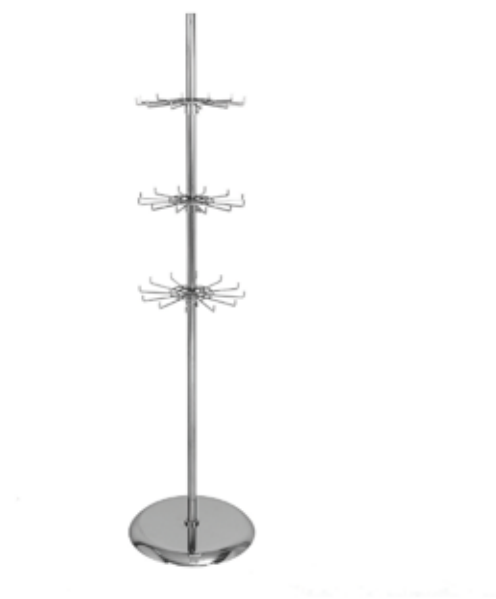
Revolving belt rack. 18" round base, 52" high, 1" diameter upright and 18" ring with 20 hooks. Threaded top for sign holder.

**1005**

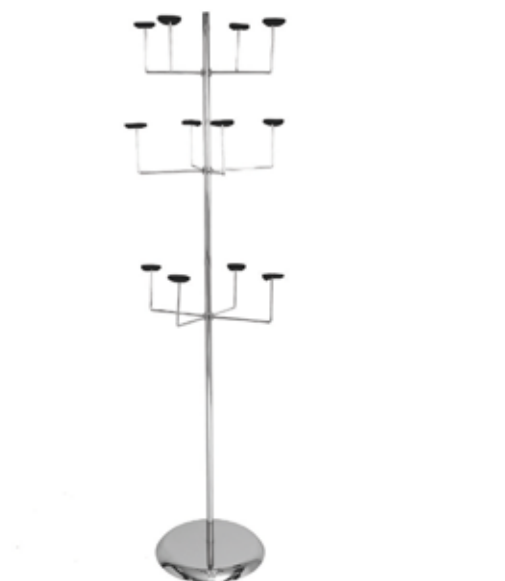
Two tier revolving belt rack. 18" base, 60" high, 1-1/4" diameter upright. One 19" ring with 19 hooks and one 27" ring with 27 hooks. Threaded top for sign holder.

1006

Triple tier revolving belt rack. 18" base, 70" high, 1-1/4" diameter upright. Three 13" rings with 12 hooks. Threaded top for sign holder.

**1007**

Revolving millinery tree. 18" base, 72" high, 1" diameter upright. Total of 12 arms with foam caps.

**1008**

Folding lingerie tower. 1" square tubing frame with levelers and 16 twist-on arms.



**1100**

Collapsible garment rack. 48" hangrail of 1" diameter round tubing with 12" pullout arm. Adjustable 55", 60" and 65" high. Casters included.

**1103B**

"Z" rack with 60" hangrail and upright of 1-1/4" diameter round tubing. Base of 1-1/2" square tubing in epoxy black finish. Rack is 69" high, 22" wide with four rubber casters.

**1105**

Single hangrail rolling rack. 1" square tubing frame, 20" wide. 60" hangrail long hangrail adjustable from 54" to 74" high with 12" pullout arms. 3" rubber casters included.

VAL1105R

Single hangrail rolling rack. 60"L x 22"W x 60"H with casters.

**1126**

Double collapsible garment rack.

**1115**

12" height extension for #1103B "Z" rack.

**1116**

60" add-on hangrail for #1103B "Z" rack.



**1107B-W/L / 1107B**

Twin wheel caster 3/8" - 16 threading, black hood with lock / without lock.

**1108B-W/L / 1108B**

Twin wheel caster 5/16" - 18 threading, black hood with lock / without lock.

**1109 / 1110**

3" industrial bearing caster, 3/8" - 16 threading with lock / without lock.

1113 / 1114

3" industrial bearing caster, 5/16" - 18 threading with lock / without lock.

**1117 / 1118**

4" industrial bearing caster, 1/2" - 13 threading with lock / without lock.

1111

Shepherd caster, 3/8" - 16 threading.

1112

Shepherd caster, 5/16" - 18 threading.

**1122 / 1123**

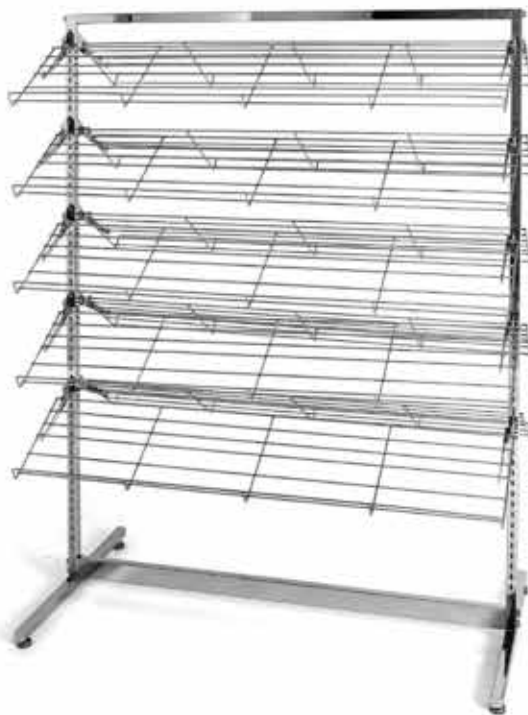
2" industrial bearing caster, 5/16" - 18 threading with lock / without lock.

1124 / 1125

2" industrial bearing caster, 3/8" - 16 threading with lock / without lock.

1202

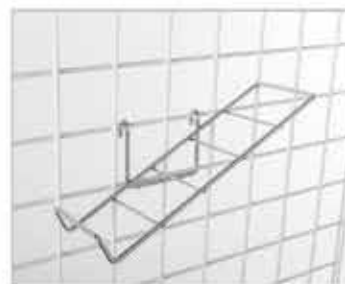
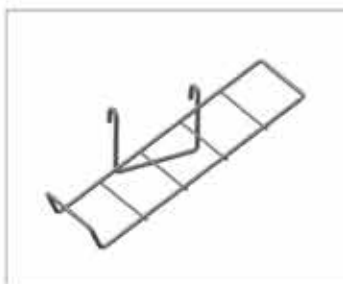
Double sided shoe rack with ten 48"L x 10"W wire shelves.

**1203**

Heavy duty fitting stool with black vinyl seat.

**1204**

Slant shoe shelf for grid in 1/4" wire, 13"L x 4-1/4"W.

**1205**

Plexi shoe displayer with toe stop.

**1206**

Plexi shoe displayer with heel stop.





1207

Plexi riser set 3", 4" & 5" high.

1208

Plexi riser set 4", 6" & 8" high.

1221

3 pieces set acrylic riser 4"W.

1222

3 pieces set acrylic riser 6"W.



1209

Plexi shoe shelf for grid, 10"L x 4"W.



1212

Plexi shoe shelf for slatwall, 10"L x 3"W.

1213

Plexi shoe shelf for slatwall, 10"L x 4"W.



1214

Plexi shoe shelf for slatwall with 2" sign lip, 10"L x 4"W.

1215

Right slant plexi shoe shelf for slatwall,
9"L x 4"W.

**1216**

Left slant plexi shoe shelf for slatwall,
9"L x 4"W.

**1217**

12" x 6" plexi shoe shelf for slatwall, 3/16"
thickness.

**1220**

12" x 18" acrylic floor mirror.

1228

12" x 18" floor mirror with chrome metal
frame.

**1226**

Shoe pod with 6" stem and 5" square base.

1227

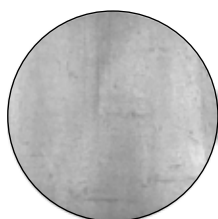
Shoe pod with 10" stem and 5" square base.



OUTRIGGERS & WALL STANDARDS

- OUTRIGGER SYSTEMS
- WALL STANDARDS

AVAILABLE FINISHES



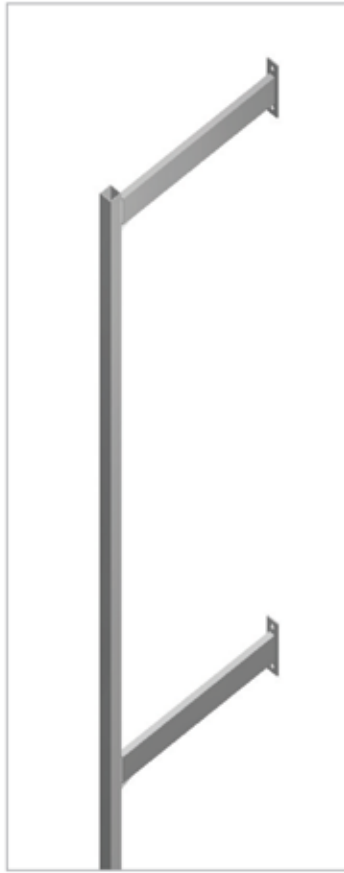
RAW METAL



SATIN CHROME



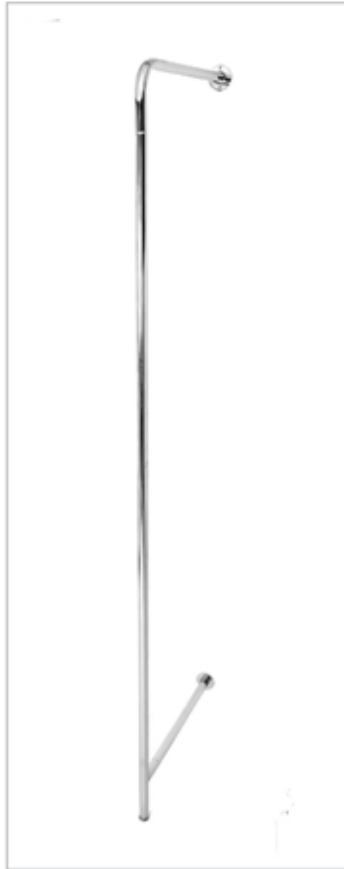
CHROME

**1301**

Upright of 1" square tubing with 1/2" slot, 1" OC, 84" high with two 14" wall mount arms.

1301-96

Upright of 1" square tubing with 1/2" slot, 1" OC, 96" high with three 14" wall mount arms.

**1302**

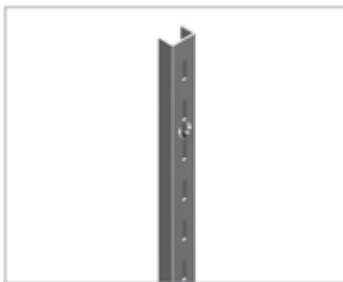
Upright of 1" x 2" rectangular tubing with 1/2" slot, 1" OC, 90" high with one 15" wall mount arm.

1303

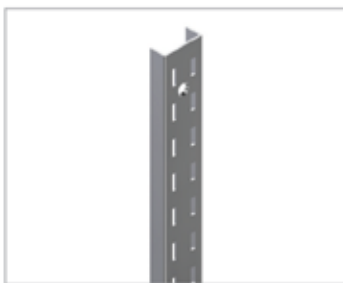
Upright of 1-1/4" diameter round tubing with 1/2" slot, 1" OC, 96" high with one 24" wall mount arm.

1400

General duty single slot wall standard, 1/2" slot, 1" OC (holes 9" apart). Available in 24", 36", 48", 60", 72", 84", 96", 120" and 144" length (24" available in chrome finish only).

**1401**

General duty twin slot wall standard, 1/2" slot, 1" OC (holes 6" apart). Available in 36", 48", 60", 72", 84" and 96" length.

**1402**

Extra heavy duty single slot wall standard, 1" slot, 2" OC (holes 9" apart). Available in 72", 84", 96" and 120" length.

**1403**

Heavy duty single slot wall standard, 1/2" slot, 1" OC (holes 9" apart). Available in 48", 60", 72", 84", 96", 120", 144" length.

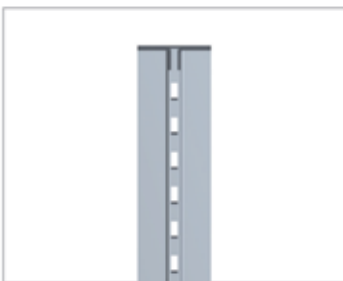
**1404**

Heavy duty twin slot wall standard, 1/2" slot, 1" OC (holes 6" apart). Available in 48", 60", 72", 84", 96", 120", 144" length.



**1405**

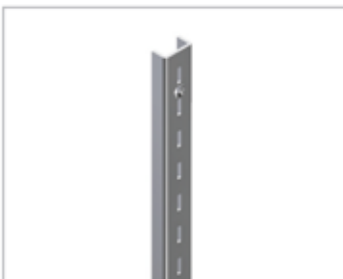
General duty single slot mini wall standard. 1/2" slot, 1" OC. Available in 48", 60", 72" and 96" length.

**1409**

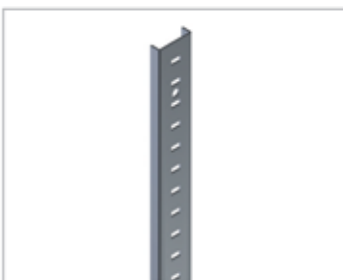
Recessed wall standard, 1/2" slot. 1" OC. Available in 96" and 120" length.

**1411**

General duty single slot wall standard 1/2" slot, 1" OC (holes 6" apart). Available in 24", 36", 48", 60", 72", 84" and 96" length.

**1412**

Heavy duty single slot wall standard, 1" OC (holes 6" apart). Available in 48", 60", 72", 96" and 120" length.

**1420**

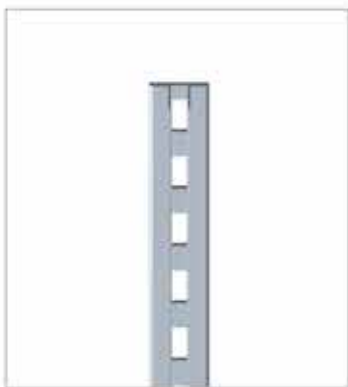
72" Pilaster.

1441

Heavy duty wide slot wall standard, 1" slot, 2" OC. Available in 96" and 120" length.

**1442**

Heavy duty wide slot recessed wall standard, 1" slot, 2" OC. Available in 120" length.

**1406**

Top cap for single slot wall standard (#1400 and 1403 series).

1413Z

Top cap for single slot wall standard (#1411 series).

**1407**

Bottom cap for single slot wall standard (#1400 and #1403 series).

1414Z

Bottom cap for single slot wall standard (#1411 series).



**1424Z**

Light duty shelf support.

1425Z

Light duty shelf support.

**1426Z**

Heavy duty shelf support.

1427Z

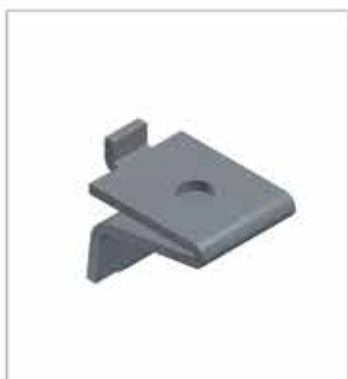
Heavy duty shelf support.

**1428Z**

Heavy duty shelf support.

1429Z

Light duty shelf support (cushion excluded).

**1430Z**

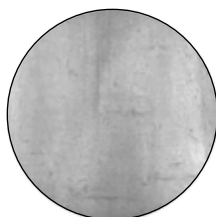
Heavy duty shelf support (cushion excluded).



BRACKETS & ACCESSORIES

- SHELF BRACKETS
- ACCESSORIES FOR WALL STANDARDS
- WALL MOUNT ACCESSORIES
- BRACKETS FOR ROUND TUBING
- CROSSBAR ACCESSORIES

AVAILABLE FINISHES



RAW METAL



SATIN CHROME



CHROME

1500

General duty bracket with end tip. Available sizes: 4", 6", 8", 10", 12", 14", 16" and 18" (fits 1/2" slot, 1" OC wall standards. Will not fit recessed wall standards).

**1501**

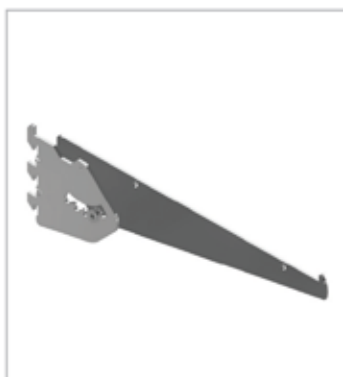
General duty wood shelf bracket with two lugs, sold in pairs. Available sizes: 4", 6", 8", 10", 12", 14" and 16" (fits 1/2" slot, 1" OC wall standards. Will not fit recessed wall standards).

**1502**

Showcase bracket with locking nut. Available sizes: 8", 10", 12", 14" and 16" (fits 1/2" slot, 1" OC wall standards).

**1507**

Adjustable shelf bracket with end tip. Adjustable in 15 degrees upswing from 90 degree down to 15, 30 and 45 degrees. Available sizes: 8", 10", 12", 14" and 16" (fits 1/2" slot, 1" OC wall standards. Will not fit recessed wall standards).



**1508**

Adjustable wood shelf bracket with two lugs, sold in pairs. Adjustable in 15 degrees upswing from 90 degree down to 15, 30 and 45 degrees. Available sizes: 8", 10", 12", 14" and 16" (fits 1/2" slot, 1" OC wall standards. Will not fit recessed wall standards).

**1509**

General duty shelf bracket. Available sizes: 8", 10", 12", 14", 16" and 18" (fits 1/2" slot, 1" OC wall standards).

**1510**

Showcase bracket. Available sizes: 8", 10", 12", 14" and 16" (fits 1/2" slot, 1" OC wall standards).

**1513**

Heavy duty wood shelf brackets, sold in pairs. Available sizes: 8", 10", 12", 14", 16", 18", 20", 22" and 24" (fits 1/2" slot, 1" OC wall standards).

1600

Bracket for use with #2012 "U" cup. Available sizes: 10", 12" and 14" (fits 1/2" slot, 1" OC wall standards).

**1601**

Bracket for use with #2013 "U" cup. Available sizes: 10", 12" and 14" (fits 1/2" slot, 1" OC wall standards).

**1602**

12" bracket for use with #1906, #2014 and #2015 snap on attachment (fits 1/2" slot, 1" OC wall standards).

**1603**

14" bracket for use with #1906, #2014 and #2015 snap on attachment (fits 1/2" slot, 1" OC wall standards)

**1606**

3" bracket for use with #1906, #2014 and #2015 snap on attachment (fits 1/2" slot, 1" OC wall standards).

**1607**

Heavy duty twin bracket with "U" cup for 1" or 1-1/16" round hangrail. Available sizes: 8", 10", 12", 14" and 16" (fits 1/2" slot, 1" OC wall standards).

1608

Heavy duty twin bracket with "U" cup for 1-1/4" or 1-5/16" round hangrail. Available sizes: 8", 10", 12", 14" and 16" (fits 1/2" slot, 1" OC wall standards).



**1609**

12" bracket for 1" or 1-1/16" round tube (fits 1/2" slot, 1" OC wall standards).

**1610**

12" bracket for 1-1/4" or 1-5/16" round tube (fits 1/2" slot, 1" OC wall standards).

**1612**

14" wall mount bracket for outrigger. Made of 1/2" x 1-1/2" rectangular tubing (fits 1/2" slot, 1" OC wall standards).

**1613**

Rear mount bracket for 1" or 1-1/16" round tube (fits 1/2" slot, 1" OC wall standards).

**1614**

Rear mount bracket for 1-1/4" or 1-5/16" round tube (fits 1/2" slot, 1" OC wall standards).

**1615**

Side mount bracket for 1" or 1-1/16" round tube (fits 1/2" slot, 1" OC wall standards).

**1616**

Side mount bracket for 1-1/4" or 1-5/16" round tube (fits 1/2" slot, 1" OC wall standards).

1700

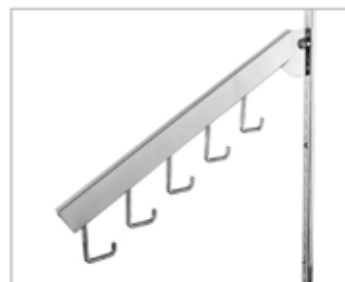
16" waterfall in 1/2" x 1-1/2" rectangular tubing with 7 balls (fits 1/2" slot, 1" OC wall standards).

**1701**

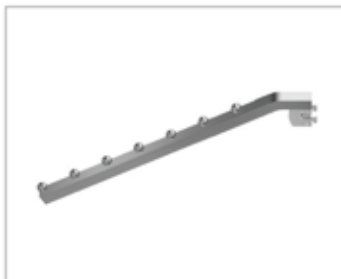
12" straight faceout in 1/2" x 1-1/2" rectangular tubing (fits 1/2" slot, 1" OC wall standards).

**1702**

16" waterfall in 1/2" x 1-1/2" rectangular tubing with 5 hooks (fits 1/2" slot, 1" OC wall standards).

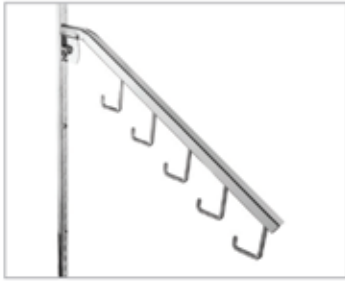
**1703**

18" waterfall in 3/4" square tubing with 7 balls (fits 1/2" slot, 1" OC wall standards).

**1704**

12" straight faceout in 3/4" square tubing (fits 1/2" slot, 1" OC wall standards).



**1705**

18" waterfall in 3/4" square tubing with 5 hooks (fits 1/2" slot, 1" OC wall standards).

**1706**

Glass shelf support for brackets. Available sizes: 24", 30" 36" and 48" (fits 1/2" slot, 1" OC wall standards).

**1707**

"U" hangrail of 1/2" x 1-1/2" rectangular tubing. Available sizes: 24", 36" and 48" (fits 1/2" slot, 1" OC wall standards).

**1708**

Straight crossbar of 1/2" x 1-1/2" rectangular tubing. Available sizes: 24", 36" and 48" (fits 1/2" slot, 1" OC wall standards).

**1720**

"U" hangrail of 1/2" x 1-1/2" rectangular tubing. Available sizes: 24", 36" and 48" (fits 1" slot, 2" OC wall standards).

1721

Straight crossbar of 1/2" x 1-1/2" rectangular tubing. Available sizes: 24", 36" and 48" (fits 1" slot, 2" OC wall standards).

**1709**

Heavy duty center shelf rest.

**1710**

Heavy duty front shelf rest.

**1711**

Heavy duty left shelf rest.

**1712**

Heavy duty right shelf rest.



**1713**

General duty front shelf rest.

**1714**

General duty center shelf rest.

**1715**

General duty end shelf rest.

**1716**

Rubber cushion for knife bracket - grey.

1718

Rubber cushion for knife bracket - clear.

**1717**

Rubber rest cushion - grey.

1719

Rubber rest cushion - clear.

1800

Straight faceout for crossbar, in 1/2" x 1-1/2" rectangular tubing. Available sizes: 4", 6", 8", 10" and 12".

**1801-16C**

16" straight faceout for crossbar in 1/2" x 1-1/2" rectangular tubing.

**1800-1003C**

10" x 3" offset faceout in 1/2" x 1-1/2" rectangular tubing.

**1802**

16" crossbar waterfall with 7 balls in 1/2" x 1-1/2" rectangular tubing.

**1803**

16" crossbar waterfall with 5 hooks in 1/2" x 1-1/2" rectangular tubing.



**1804**

1/4" wire hooks for crossbar. Available sizes: 4", 6", 8", 10" and 12".

**1805**

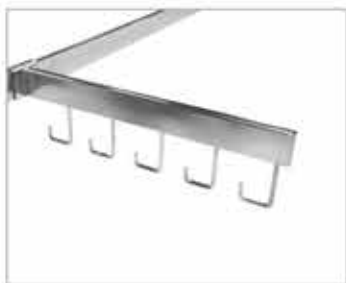
12" heavy duty peg for crossbar. Made of 3/8" diameter rod with 1-3/4" diameter end disc.

**1815**

1/4" wire safety hooks for crossbar. Available sizes: 4", 6", 8", 10" and 12".

**1816**

Wire hat display for crossbar.

**1817**

5 hooks straight faceout for crossbar.

1806

3" wall mount fitting room hook.

**1807**

6" wall mount fitting room hook.

**1808**

12" wall mount straight faceout in 1/2" x 1-1/2" rectangular tubing.

**1809**

16" wall mount straight faceout in 1/2" x 1-1/2" rectangular tubing.

**1810**

16" wall mount waterfall with 7 balls in 1/2" x 1-1/2" rectangular tubing.

**1811**

16" wall mount waterfall with 5 hooks in 1/2" x 1-1/2" rectangular tubing.

**1812**

12" wall mount straight faceout in 3/4" square tubing.

1813

18" wall mount waterfall with 7 balls in 3/4" square tubing.

1814

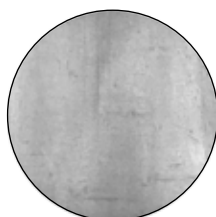
18" wall mount waterfall with 5 hooks in 3/4" square tubing.



HANGRAILS & ACCESSORIES

- RECTANGULAR HANGRAILS
- ROUND HANGRAILS
- SQUARE HANGRAILS

AVAILABLE FINISHES



RAW METAL



SATIN CHROME



CHROME

NOTE: Special colours are available upon request



1900

Rectangular hangrail in 1/2" x 1-1/2" tubing. Available sizes: 24", 36", 48", 60", 72", 96", 120" and 144".



1902

Steel end cap with extension.



1903

Steel end cap.



1904

Rectangular hangrail slicer.



1905

2-1/2" end bracket for rectangular hangrail, sold in pairs (fits 1/2" slot, 1" OC wall standards).

1906

Snap on socket for 1/2" x 1-1/2" rectangular hangrail (fits #1602, #1603, #1606, #1908 and #1909 brackets).



1908

12" hangrail bracket for snap on attachment (fits 1" slot, 2" OC wall standards).



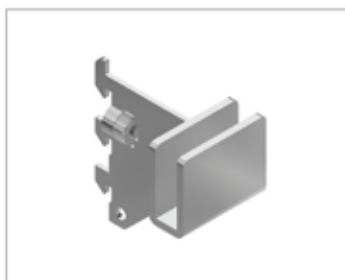
1909

14" hangrail bracket for snap on attachment (fits 1" slot, 2" OC wall standards).



1910

2" bracket for rectangular hangrail (fits 1/2" slot, 1" OC wall standards).



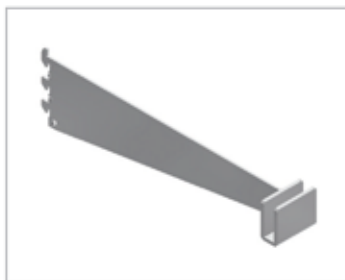
1912

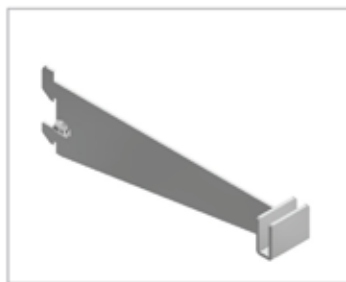
3-3/8" bracket for rectangular hangrail (fits 1" slot, 2" OC wall standards).



1913

12" bracket for rectangular hangrail (fits 1/2" slot, 1" OC wall standards).





1914

12" bracket for rectangular hangrail (fits 1" slot, 2" OC wall standards).

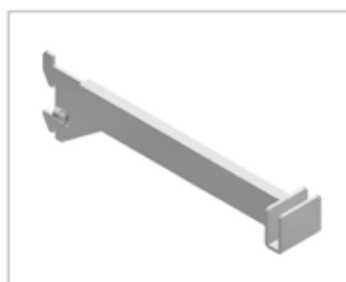


1915

12" bracket for rectangular hangrail in 1/2" x 1-1/2" rectangular tubing (fits 1/2" slot, 1" OC wall standards).

1915-6

6" bracket for rectangular hangrail in 1/2" x 1-1/2" rectangular tubing (fits 1/2" slot, 1" OC wall standards).



1916

12" bracket for rectangular hangrail in 1/2" x 1-1/2" rectangular tubing (fits 1" slot, 2" OC wall standards).



1917

16" waterfall with 7 balls in 1/2" x 1-1/2" rectangular tubing (fits 1" slot, 2" OC wall standards).



1918

16" waterfall with 5 hooks in 1/2" x 1-1/2" rectangular tubing (fits 1" slot, 2" OC wall standards).

1919

12" straight faceout in 1/2" x 1-1/2" rectangular tubing (fits 1" slot, 2" OC wall standards).



1921

Heavy duty wood shelf bracket, sold in pairs. Available sizes: 10", 12", 14", 16" and 18" (fits 1" slot, 2" OC wall standards).



1922

Steel end cap with tip.



1923

Side mount bracket for rectangular hangrail (fits 1/2" slot, 1" OC wall standards).



1924

12" end bracket for rectangular hangrail, sold in pairs (fits 1/2" slot, 1" OC wall standards).





2000

1" diameter round tubing, 16 gauge. Available sizes: 48", 60", 72", 96", 120" and 144".

2001

1-1/16" diameter round tubing, 14 gauge. Available sizes: 48", 60", 72", 96", 120" and 144".

2002

1-1/4" diameter round tubing, 16 gauge. Available sizes: 48", 60", 72", 96", 120" and 144".

2003

1-5/16" diameter round tubing, 14 gauge. Available sizes: 96", 120" and 144".



2004

Open flange for 1-1/4" and 1-5/16" round tubing.

2005

Closed flange for 1-1/4" and 1-5/16" round tubing.



2006

Open flange for 1" and 1-1/16" round tubing.

2007

Closed flange for 1" and 1-1/16" round tubing.



2008

End cap for 1" and 1-1/16" round tubing.

2009

End cap for 1-1/4" and 1-5/16" round tubing.

2010

Splicer for 1" and 1-1/16" round tubing.

**2011**

Splicer for 1-1/4" and 1-5/16" round tubing.

2012

"U" cup for 1" and 1-1/16" round tubing.

**2013**

"U" cup for 1-1/4" and 1-5/16" round tubing.

**2014**

Snap on spring clamp socket for 1" and 1-1/16" round tubing.

2015

Snap on spring clamp socket for 1-1/4" and 1-5/16" round tubing.

**2016**

Round domed end cap for 1" and 1-1/16" round tubing.

2016A

Round domed end cap for 1-1/4" and 1-5/16" round tubing.



2100

1" square tubing, 16 gauge. Available sizes: 48", 60" and 72".

2101

1" square tubing, 16 gauge. 2 side with 1/2" slot, 1" OC slotting. Available sizes: 96", 120" and 144".

2102

1" square tubing, 16 gauge. 4 side with 1/2" slot, 1" OC slotting. Available sizes: 96", 120" and 144".

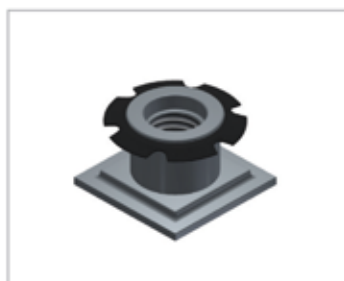
2110

1" square tubing, 16 gauge. One side with 1/2" slot, 1" OC slotting. Available sizes: 96", 120" and 144".



2106

Plastic chrome end cap for 1" square tubing.



2107

Plug for sign stem 3/8" - 27 threading (fits 1" square tubing).

2108

Plug for leveler 3/8" - 16 threading (fits 1" square tubing).

2108-A

Plug for leveler 5/16" - 18 threading (fits 1" square tubing).



2109

Leveler 3/8" - 16 threading.

2109-A

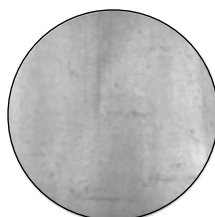
Leveler 5/16" - 18 threading.



METAL SIGN HOLDER & ACCESSORIES

- BULLETIN STANDS
- CARD FRAMES
- SIGN CLAMPS AND STEMS

AVAILABLE FINISHES



RAW METAL



SATIN CHROME



CHROME

2200N

28" x 22" sign stand with 15" trumpet base, 67" high.

**2201**

28" x 22" sign stand with two 31" round uprights and 10" x 14" base, 59" high.

**2202**

22" x 14" sign stand with two 7/8" square upright and 12" x 15" extra heavy base, 54" high.

2203

28" x 22" sign stand with two 7/8" square upright and 12" x 15" extra heavy base, 60" high.



**2205**

28" x 22" sign stand with 1/2" x 1-1/2" rectangular tubing frame and 15" x 24" base, 56" high.

**2233**

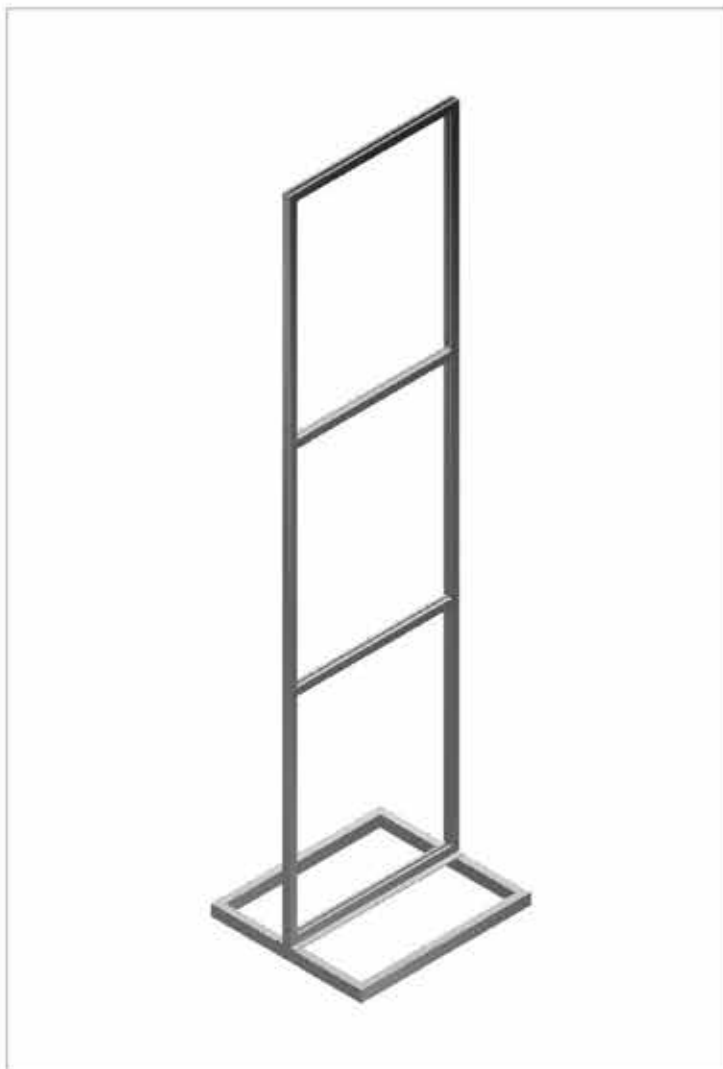
Banner display with 1" square tube upright and 16" square flat base. Height adjustable from 54" to 96". Accepts notched or pocket style banners 48" to 84"H x 24"W.

**2242**

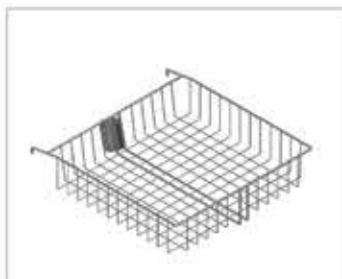
28" x 22" two-tier bulletin sign holder.

99-LOB-207

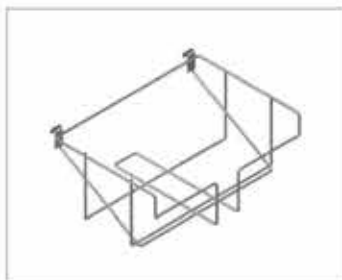
Three-tier bulletin stand.

**2240**

Literature basket for 2200N, 13-1/2"L x 13"W x 4"H.

**2231**

Literature basket 13-1/2"L x 9"W x 4-1/2"H.



**2206**

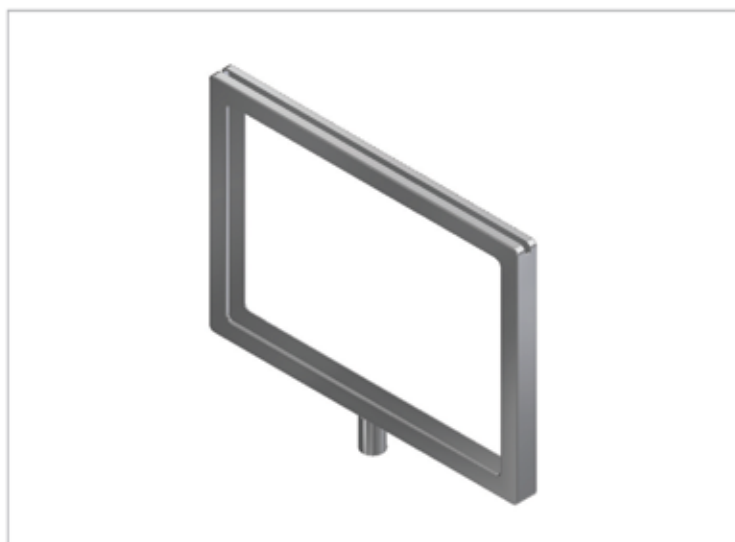
5-1/2"H x 7"W card frame with fittings for 1/4" or 3/8" stem (rounded corners).

2207

7"H x 11"W card frame with fittings for 1/4" or 3/8" stem (rounded corners).

2208

11"H x 14"W card frame with fittings for 1/4" or 3/8" stem (rounded corners).

**2209**

5-1/2"H x 7"W card frame with fittings for 1/4" or 3/8" stem.

2210

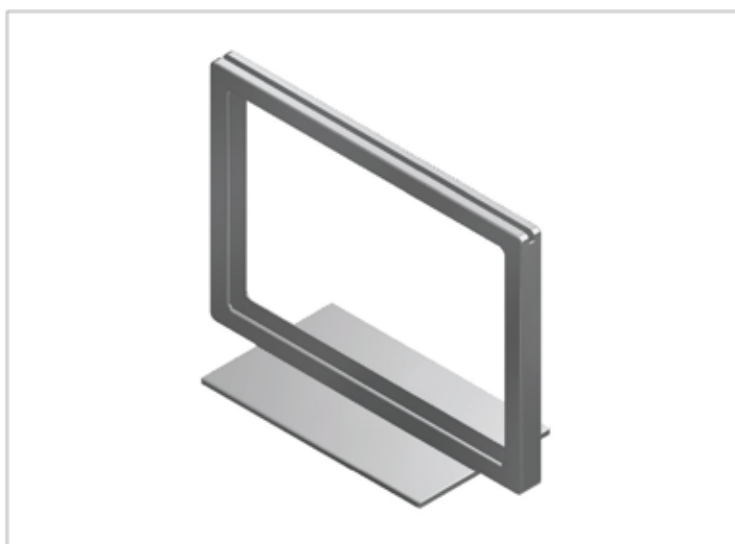
7"H x 11"W card frame with fittings for 1/4" or 3/8" stem.

2211

11"H x 14"W card frame with fittings for 1/4" or 3/8" stem.

2236

8-1/2"H x 11"W card frame with fittings for 1/4" or 3/8" stem.

**2212**

5-1/2"H x 7"W card frame with 3" x 5" felt base.

2213

7"H x 11"W card frame with 3" x 5" felt base.

2214

11"H x 14"W card frame with 4" x 7" felt base.

2215

5-1/2"H x 7"W card frame with bottom magnet.

2216

7"H x 11"W card frame with bottom magnet.

2217

11"H x 14"W card frame with bottom magnet.

**2224**

5-1/2"H x 7"W card frame with 4" stems and 3-1/2" x 5" felt bottom base.

2225

7"H x 11"W card frame with 4" stems and 3-1/2" x 5" felt bottom base.

2226

11"H x 14"W card frame with 4" stems and 4" x 7" felt bottom base.

**2227**

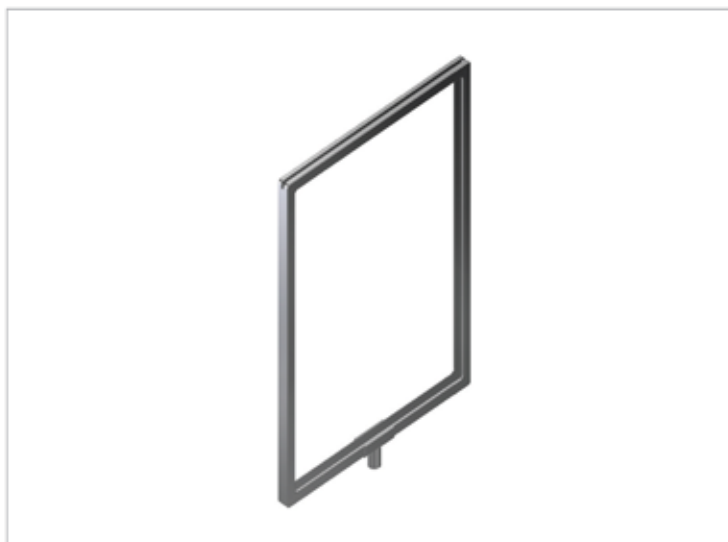
14"H x 11"W card frame with fittings for 1/4" or 3/8" stem.

2237

11"H x 8-1/2"W card frame with fittings for 1/4" or 3/8" stem.

2238

11"H x 7"W card frame with fittings for 1/4" or 3/8" stem.



**2228**

5-1/2"H x 7"W wall mount card frame.

2229

7"H x 11"W wall mount card frame.

2230

11"H x 14"W wall mount card frame.

2232

5-1/2"H x 7"W wall mount card frame.

**2218**

5-1/2"H x 7"W card frame with 10" non-adjustable stem and shovel base.

2219

7"H x 11"W card frame with 10" non-adjustable stem and shovel base.

2220

11"H x 14"W card frame with 10" non-adjustable stem and shovel base.

2221

5-1/2"H x 7"W card frame with stem adjustable from 14" to 22" high, shovel base.

2222

7"H x 11"W card frame with stem adjustable from 14" to 22" high, shovel base.

2223

11"H x 14"W card frame with stem adjustable from 14" to 22" high, shovel base.

2241C

11"H x 7"W card frame with 10" non-adjustable stem and shovel base.

2300-3

3" stem with 3/8" - 27 threaded ends.

2300-4

4" stem with 3/8" - 27 threaded ends.

2300-12

12" stem with 3/8" - 27 threaded ends.

2300-14

14" stem with 3/8" - 27 threaded ends.

2300-18

18" stem with 3/8" - 27 threaded ends.

2301-6

6" stem with 3/8" - 27 threaded ends.

2302-10

10" stem with 3/8" - 27 threaded ends.

**2303**

3" swedged stem, 3/8" - 27.

2304

6" swedged stem, 3/8" - 27.

**2305**

Swedged cup fitting holds 3/8" swedged stem (cup fits into 9/16" hole).



**2306**

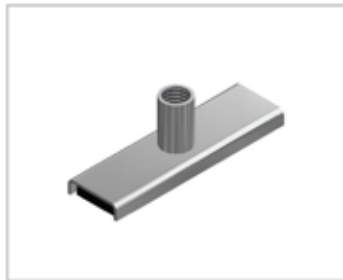
Threaded magnetic holder for 3/8" stems.

**2307**

Swedged magnetic holder for 3/8" stems.

**2308**

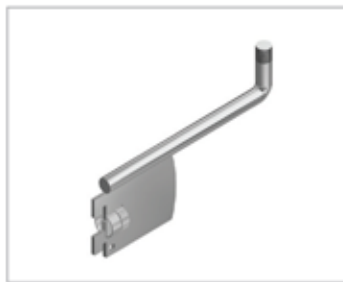
3" long magnetic holder with 1/4" and 3/8" fitting.

**2309**

Card frame attachment for 1/2" slot, 1" OC wall standards. 5" long with 3/8" threading.

**2310**

Card frame attachment for 1/2" slot, 1" OC wall standards. 12" long with 3/8" threading.

**2311**

All-purpose clamp for round, square and rectangular tube with 1/4" and 3/8" fitting.

**2312**

"C" clamp with 2" stem for 3/8" threading (fits 1" and 1-1/16" diameter round tube).

**2313**

"C" clamp with 2" stem for 3/8" threading (fits 1-1/4" and 1-5/16" diameter round tube).



2314

"O" clamp with 2" stem for 3/8" threading (fits 1" and 1-1/16" diameter round tube).

**2315**

"O" clamp with 2" stem for 3/8" threading (fits 1-1/4" and 1-5/16" diameter round tube).

**2318**

Square tubing clamp with no stem (fits 1" square tubing with 3/8" fitting).

**2319**

Square tubing clamp with 3" stem for 3/4" to 7/8" square tube.

**2320**

Rectangular tubing clamp with 2" stem and 3/8" fitting (fits 1/2" x 1-1/2" rectangular tube).

**2321**

Rectangular tubing clamp with no stem and 3/8" fitting (fits 1/2" x 1-1/2" rectangular tube).





2322

Spring clamp fits 1" square tube with 1/4" and 3/8" fitting.

2323

Spring clamp fits 1/2" x 1-1/2" rectangular tube with 1/4" and 3/8" fitting.



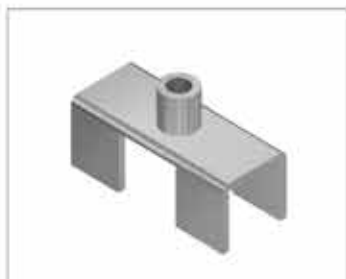
2324

Spring clamp fit 1" x 3/16" flat bar with 1/4" and 3/8" fitting.



2325

Sign holder made of 1/8" wire with 3" stem, 3/8" - 27 threaded.



2326

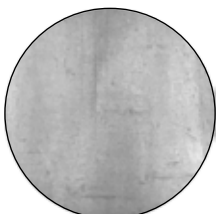
Sign adapter for 1" square tube with 1/4" and 3/8" fitting.



GRID PANELS & ACCESSORIES

- GRID AND SLATGRID PANELS
- GRID PANEL CONNECTORS
- GRID PANEL FASTENING DEVICES
- GRID PANEL ACCESSORIES

AVAILABLE FINISHES



RAW METAL



SATIN CHROME



CHROME



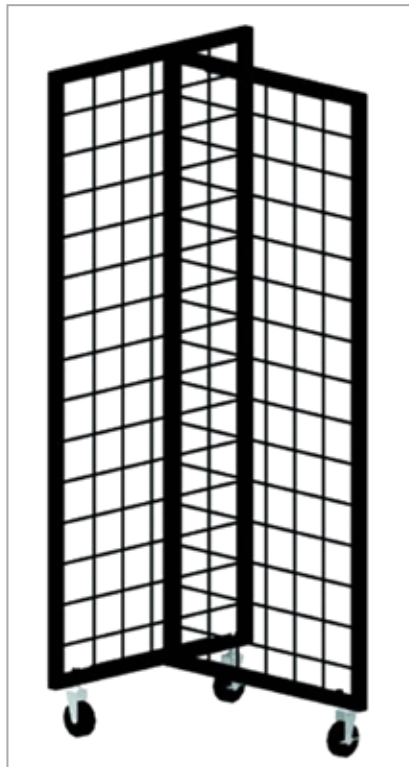
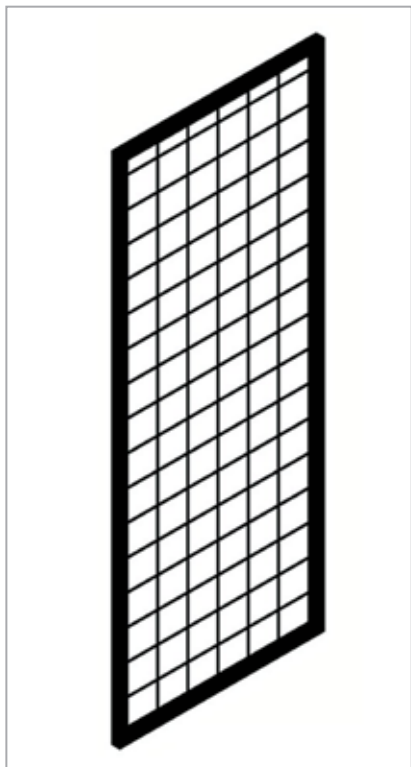
WHITE POWDER COAT



BLACK POWDER COAT

NOTE: Special colours are available upon request

FEATURED GRID PANELS & ACCESSORIES

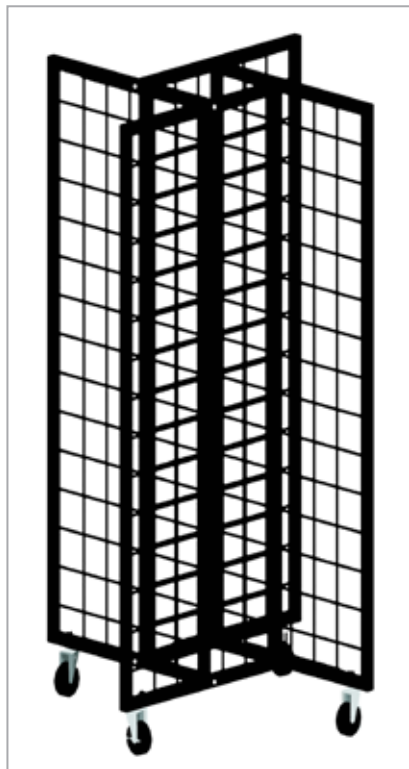
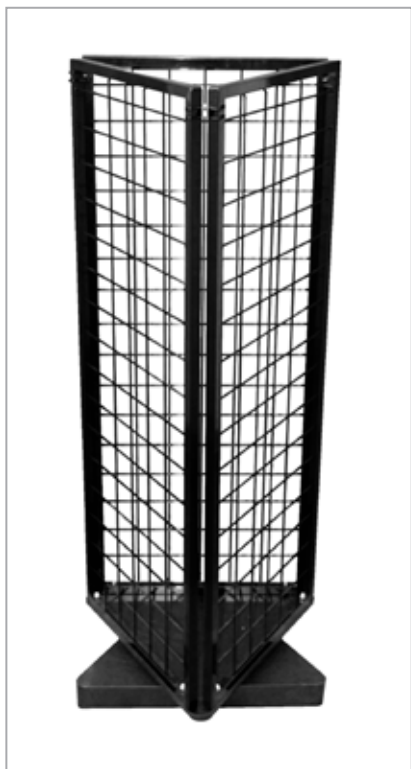


3462-12

12" and 24" include 1 wall mount bracket. 48" Includes 2 wall mount brackets and 2 adjustable levelers (installed). 60" H x 12" W.

5169

Three-Way Merchandiser. Includes 2 heavy-duty locking casters. Use with all grid mount accessories.



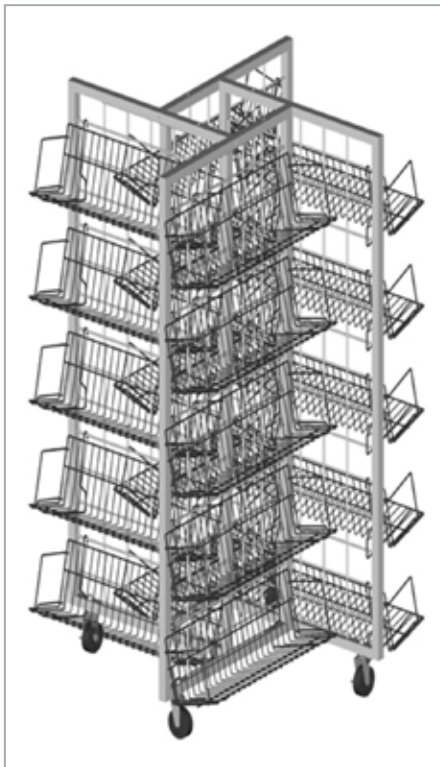
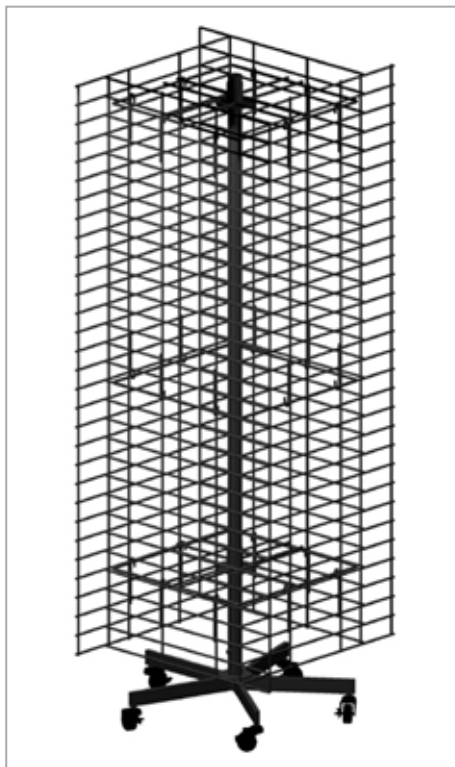
3707

5' Triangular Spinning Display

3715

Four-Way Merchandiser Includes 2 locking casters and 2 non-locking casters
Size: 57"H X 36" Sq. (24"W panels)
Use with all grid mount accessories.

FEATURED GRID PANELS & ACCESSORIES

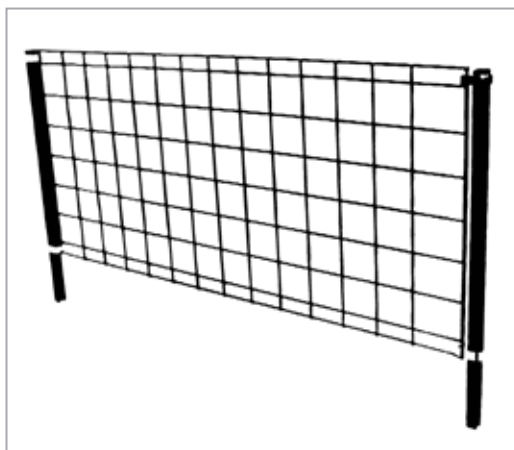
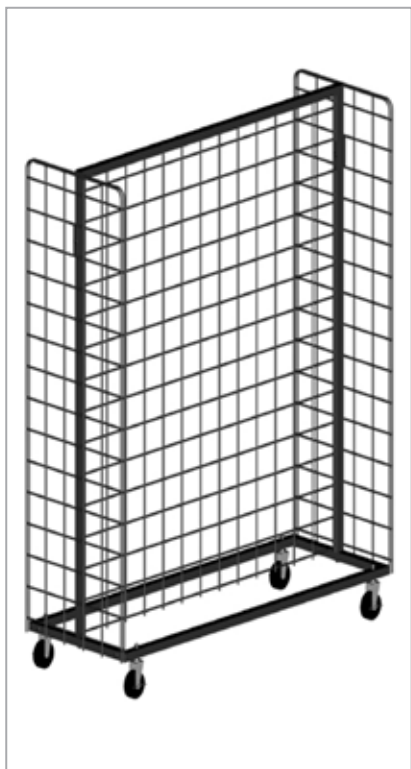


14041-W

48-Single peg 6-Tier spinner. 72"H X 26"W.

ITEM ID

Item's full description with measurements.



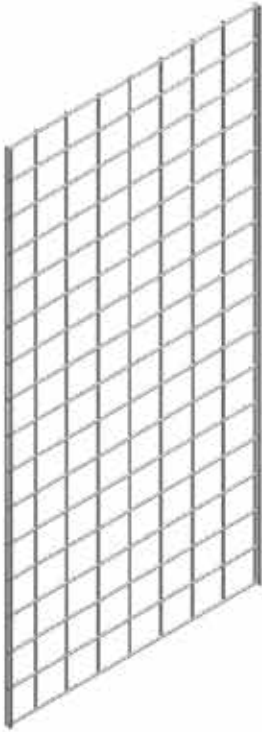
9058-24

Display Grid Build-Up. Chrome connectors attach grid to uprights, uprights drop into browser and impact unit frames.

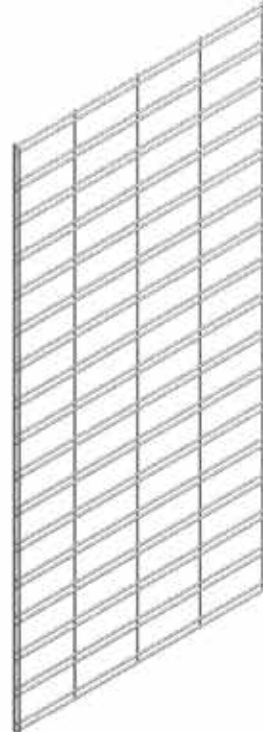
Designed for use with modular browser units (#9051P & #9065) and impact unit (#9070).
Size: 54" W x 24" H

3710-48

Island Unit. Heavy Duty 1" SQ. Tube Frame with 1/4" dia. fully welded wire grid. Mobility provided by 3" heavy-duty locking non-marking casters. Fully versatile 3-1/2" on center grid to help you accommodate all of your display needs. Will hold any of our grid mount or universal mount shelves and accessories. Up to 600lbs. weight capacity.



Grid panel 3" x 3" spacing with 1/4" wire, double wire on vertical sides.



Slatgrid panel 3" x 6" spacing with 1/4" wire, double wire on vertical sides.

Item #	W	H
2400-24	2	4
2401-25	2	5
2402-26	2	6
2403-27	2	7
2404-28	2	8
2405-44	4	4
2406-45	4	5
2421-36	3	6

Item #	W	H
2407-24	2	4
2408-25	2	5
2409-26	2	6
2410-27	2	7
2411-28	2	8
2412-44	4	4
2413-45	4	5



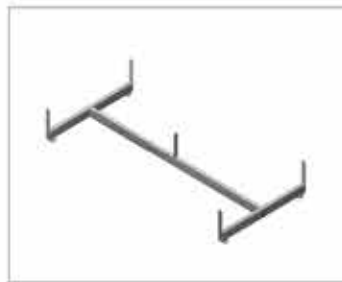
2500

Four way base with twin hooded casters.



2501

Triangle base with twin hooded casters.



2502

Gondola base with levelers.



2503

Grid panel leg with 12" upright of 1" square tubing. 24" base of 1" x 2" rectangular tube, levelers included.



2504

Grid panel support bracket for 1/2" slot, 1" OC wall standards.

2505

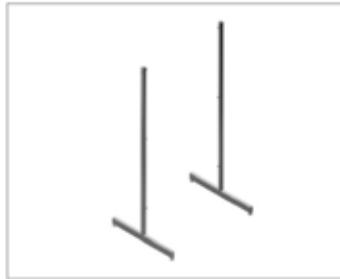
Wall mount support bracket for grid, 3" long.

**2506-6**

1/8" diameter ceiling hook. Available sizes: 6", 12", 18", 24", 30", 36", 48", 60" and 72".

**2507**

Grid panel leg with 60" upright of 1" square tube. 24" base of 1" x 2" rectangular tubing, levelers included.

**2515**

Offset grid support bracket for 1/2" slot, 1" OC wall standards (sold in pairs).

**2516**

"L" leg for grid panel, 14"D x 20"H.





2517

"T" base for grid panel, levelers included.



2518

"L" base for grid panel, levelers included.



2522

Grid wall mount bracket, 14GA metal plate.



2523

Grid sign clip.



OUC-003

Grid panel leg.

2508

Heavy duty grid connector.

**2509**

General duty grid connector.

**2510**

Two-way grid connector. Connects two panels at 90-degree angle.

**2511**

Four-way grid connector. Connects four panels at 90-degree angle.

**2512**

Grid to square tubing connector for double wired edge. Connects 1" square tubing to grid panel.

**2513**

Grid to square tubing connector for single wired edge. Connects 1" square tubing to grid panel.

**2514**

Square tubing connector. Connects 1" square tubing to 1" square tubing at 90, 135 or 180 degree angles.





2600

12" faceout of 1/2" x 1-1/2" rectangular tubing.



2601

16" waterfall with 7 balls in 1/2" x 1-1/2" rectangular tubing.



2602

16" waterfall with 5 hooks in 1/2" x 1-1/2" rectangular tubing.



2603

12" hangrail bracket for 1" & 1-1/16" round tubing.



2604

12" hangrail bracket for 1-1/4" & 1-5/16" round tubing.



2605

12" hangrail bracket for 1/2" x 1-1/2" rectangular tubing.

2606

Shelf bracket. Available sizes: 8", 10", 12" and 14".

**2607-6**

6" faceout of 3/4" square tubing.

2607

12" faceout of 3/4" square tubing.

**2608-7**

7" waterfall with 3 balls in 3/4" square tubing.

2608

16" waterfall with 6 balls in 3/4" square tubing.

**2609**

16" waterfall with 5 hooks in 3/4" square tubing.

**2610**

1/4" wire hook with notched top plate.
Available sizes: 1", 4", 6", 8", 10", and 12".





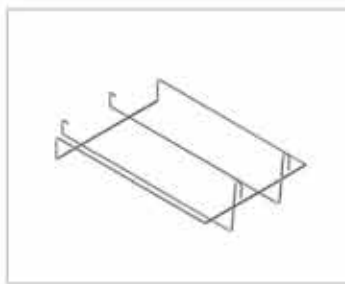
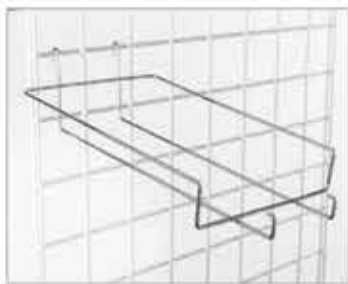
2612

Slotted adapter. Attaches 1/2" slot, 1" OC wall standard accessories to grid.



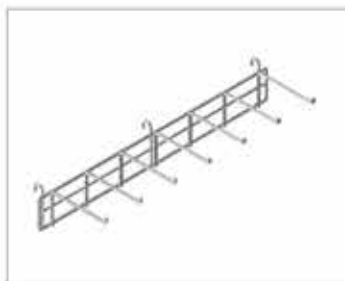
2614

Hat display for grid with 4" ring, 6" high and 4-1/2" deep.



2615

Cap merchandiser for grid, holds six caps.



2619

Belt / tie holder for grid, 24" long with seven 5-1/2" hooks.



2620

Frame hook for grid panel.

2621

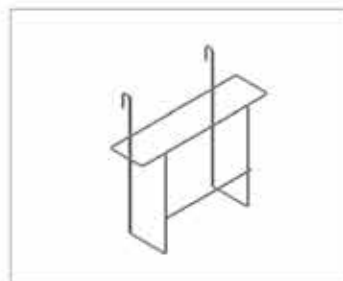
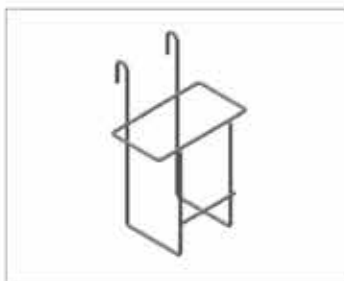
Display hook for grid panel.

**2623B**

4-1/2"L x 2-1/2"W x 7"H literature holder.

2624B

9-1/2"L x 2-1/2"W x 9" H literature holder.

**2625**

1/4" wire safety hook for grid. Available sizes: 4", 6", 8", 10" and 12".

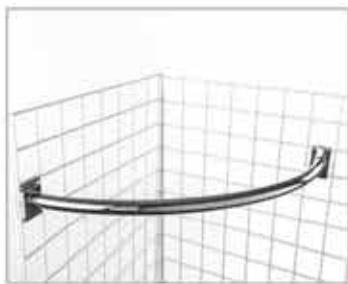
**2626**

3/16" wire loop hook for grid. Available sizes: 4", 6", 9" and 12".

**OUC-002**

1" round hangrail adapter.



**2700**

Quarter hangrail of 1-1/4" diameter round tubing.

**2701-24**

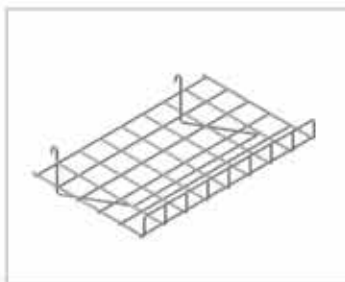
24-1/4" long straight hangrail for grid, 1-1/4" diameter round tubing.

2701-48

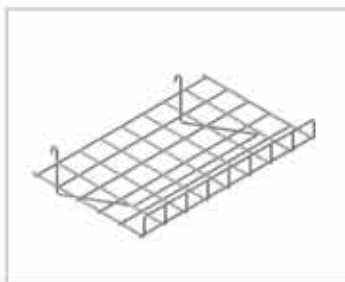
48-1/4" long straight hangrail for grid, 1-1/4" diameter round tubing.

**2702**

52-1/4" long straight hangrail for grid, 1-1/4" diameter round tubing.

**2703**

"U" bar of 1-1/4" diameter round tubing, 12" x 23" .

**2704**

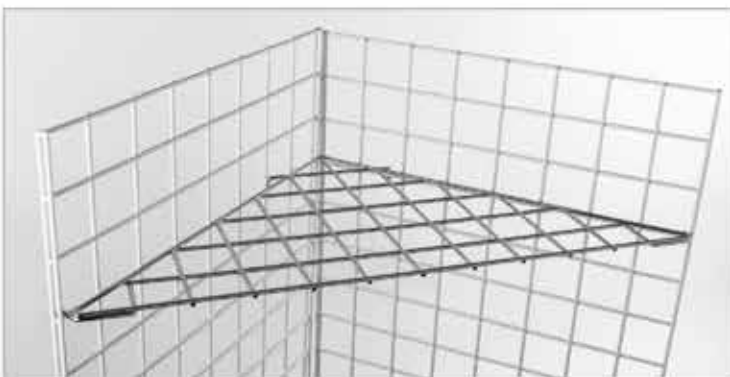
Straight grid shelf of 1/4" wire, 24"L x 15"W with 3" front lip.

2705

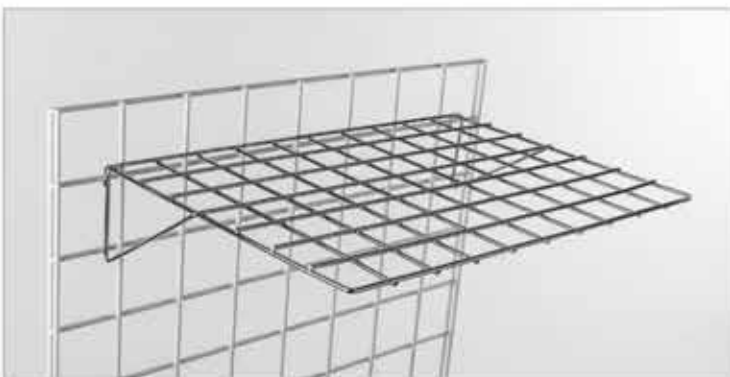
Slant grid shelf of 1/4" wire, 24"L x 15"W with 3" front lip.

**2706**

Corner grid shelf of 1/4" wire, 23" x 34" x 23".

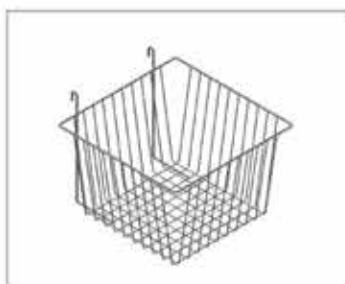
**2707**

Flat grid shelf 20"L x 14"W.

**2708**

Large basket for grid, 24"L x 12"W x 6"H.





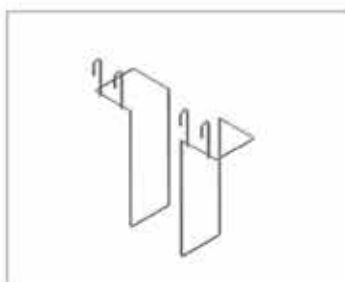
2709

Small basket for grid, 12"L x 12"W x 8"H.



2710

Slant front basket for grid, 12"L x 12"W x 8"H.



2712

Adjustable literature holder for grid, 6" high
(sold in pairs).



2730

Straight 24"L x 12"W sheet metal shelf with
5/8" front lip.



2731

Slant 24"L x 12"W sheet metal shelf with 5/8"
front lip.

2732

6" x 6" video shelf for grid panel. Available sizes: 24" and 48".

**2733**

12"L x 12"W x 4"H small wire basket.

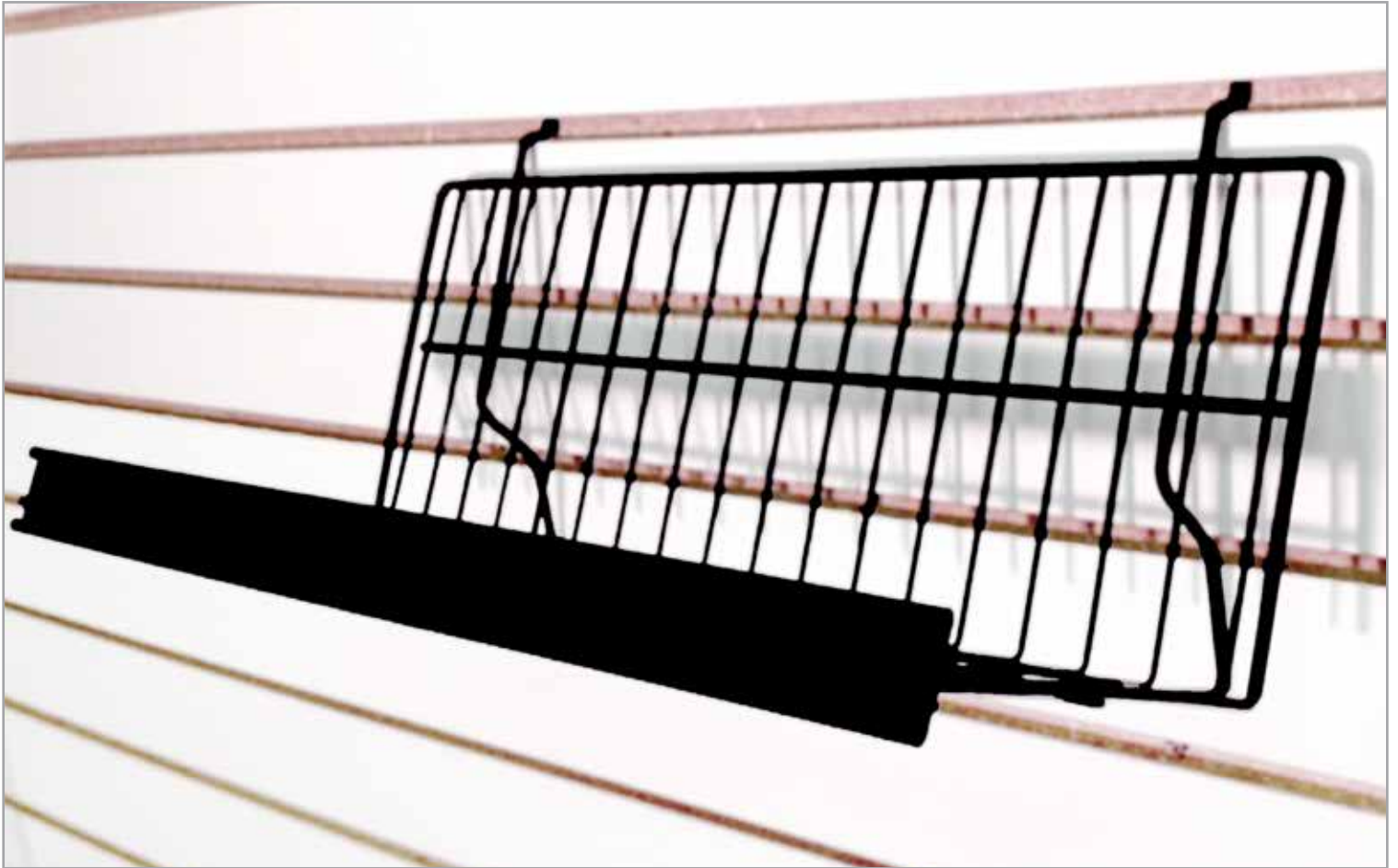
**2734**

24"L x 13"W x 4"H wire basket for grid.

**2735**

24"L x 12"W x 4"H wire basket for grid.





SLATWALL ACCESSORIES

AVAILABLE FINISHES



RAW METAL



SATIN CHROME



CHROME



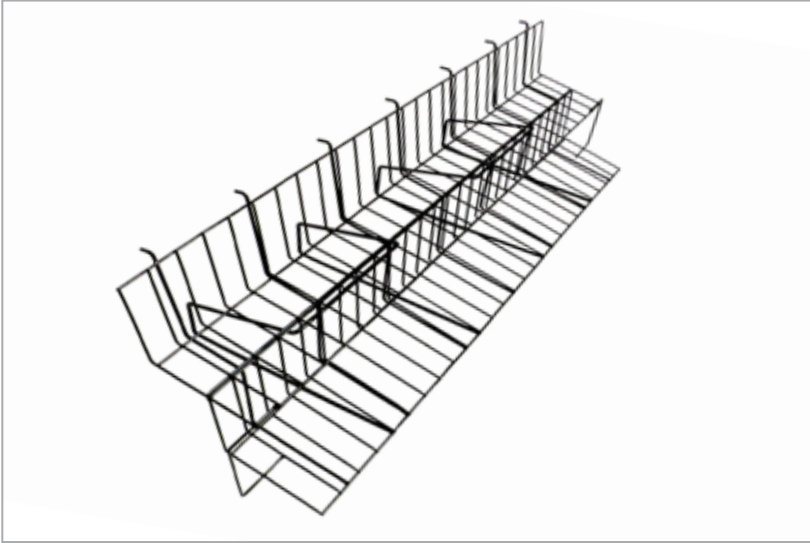
WHITE POWDER COAT



BLACK POWDER COAT

NOTE: Special colours are available upon request

FEATURED SLATWALL ACCESSORIES



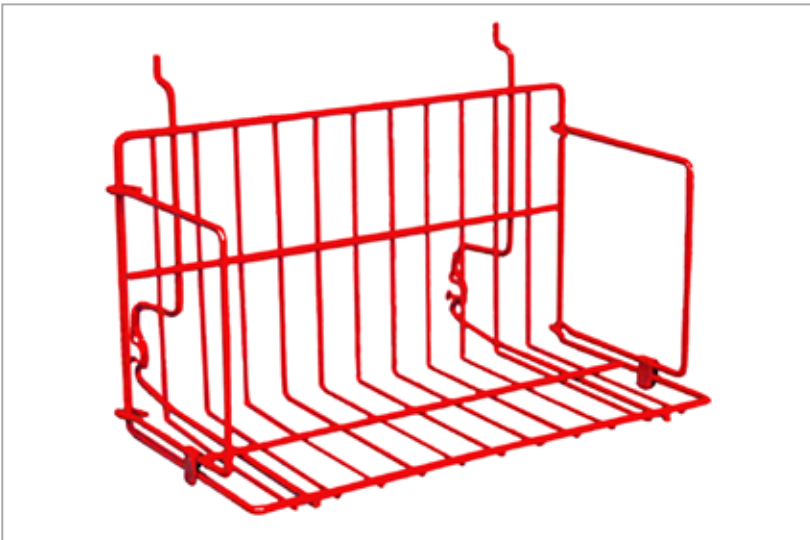
9095

Two-Tier Insert. Compatible with Impulse Table
Set of two inserts. 28 facings.
Capacity 252 CD'S or 210 DVD'S



X4551

18"L Straight Shelf with Ticket Channel.
18"L x 6"D slatwall/pegboard mount wire shelf
with 1-1/4" ticket channel.



3718-12

12'L Straight Shelf. Use on gridwall, slatwall
and pegboard.
Dimensions: 12" L x 6 1/2" H x 6 1/2" D

FEATURED SLATWALL ACCESSORIES



9095

Two-Tier Insert. Compatible with Impulse Table
Set of two inserts. 28 facings.
Capacity 252 CD'S or 210 DVD'S



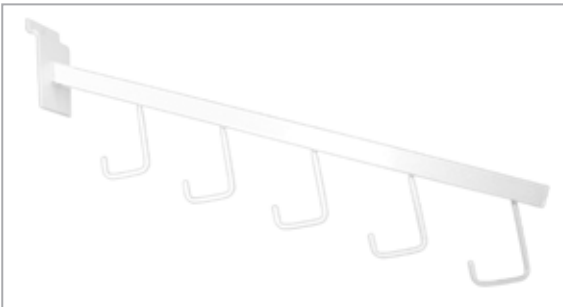
1992-4

4" Long Slatwall Hook
Features 90 degree rounded safety tip and felt back



1034

10" slatwall mount bracket



SW/5H

5 Hook Waterfall. Square Tubing Slatwall Mount



5170

Waterfall Faceout, 12" L

**2800**

12" slatwall faceout, 3/4" square tubing.

**2801**

16" slatwall faceout, 3/4" square tubing (chrome only).

**2802**

16" slatwall waterfall with 6 balls, 3/4" square tubing.

**2803**

16" waterfall with 5 hooks, 3/4" square tubing for slatwall.

**2804**

12" hangrail bracket for 1" & 1-1/16" round tubing.

**2805**

12" hangrail bracket for 1-1/4" & 1-5/16" round tubing.

**2806**

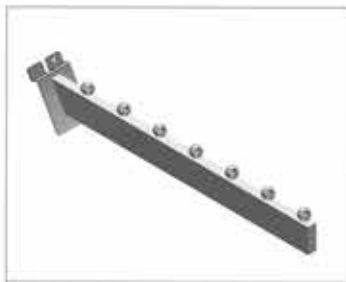
12" slatwall faceout, 1/2" x 1-1/2" rectangular tubing.

**2806-6**

6" slatwall faceout, 1/2" x 1-1/2" rectangular tubing.

2807

16" waterfall with 7 balls, 1/2" x 1-1/2" rectangular tubing.

**2807-7**

7" waterfall with 3 balls, 1/2" x 1-1/2" rectangular tubing.

**2808**

16" waterfall with 5 hooks, 1/2" x 1-1/2" rectangular tubing.

**2809**

16" faceout with 5 hooks, 1/2" x 1-1/2" rectangular tubing.

**2810**

Slatwall shelf brackets. Available sizes: 6", 8", 10", 12", 14" and 16" (16" available in chrome finish only).

**2811**

Adjustable shelf bracket with 5 position screw lock. Available sizes: 8", 10", 12" and 14".



**2812**

Slatwall wood shelf bracket. Available sizes: 8", 10", 12" and 14" (sold in pairs).

**2813**

Adjustable wood shelf brackets with 5 position screw lock. Available sizes: 8", 10", 12" and 14" (sold in pairs).

**2814**

1/4" wire hooks. Available sizes: 1", 4", 6", 8", 10" and 12".

**2816**

Slatwall frame hook.

**2817**

1/4" wire safety hooks. Available sizes: 4", 6", 8", 9", 10" and 12" (9" available in chrome and satin chrome only).

2818

7" waterfall with 3 balls, 3/4" square tubing.

**2819**

Lightweight 3/16" wire hooks. Available sizes: 4", 6", 8", 10" and 12".

**2820**

3/16" wire loop hooks. Available sizes: 4", 6" and 8".

**2822**

Slatwall wood panel adapter.

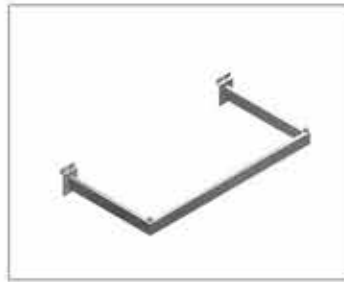
**ROY-001**

Eyeglasses display hook for slatwall.



**2900**

12" hangrail bracket for 1/2" x 1-1/2" rectangular tubing.

**2901**

"U" hang tube of 1/2" x 1-1/2" rectangular tubing. Available sizes: 24", 36" and 48".

**2902**

Glass shelf support for "U" hang tubing.

**2903**

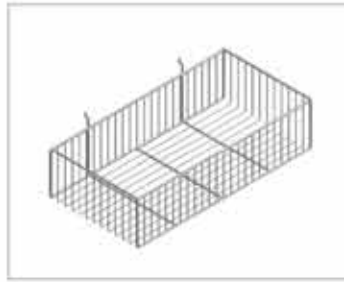
Belt / tie bar. 7"W x 24"L with eight 4" prongs.

**2904**

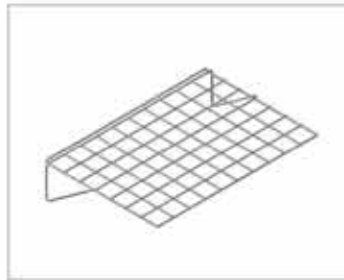
Book shelf with two pockets. Each pocket is 3" deep. Available sizes: 24" and 48".

2906

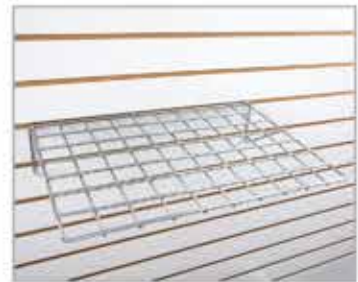
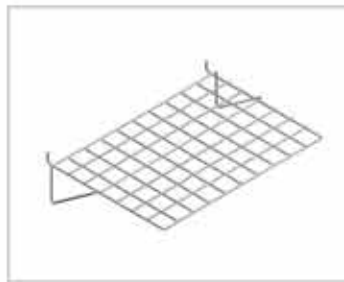
Wire basket, 12"W x 24"L x 6"H.

**2907**

Flat wire shelf of 3/16" wire, 13-1/4"W x 20"L.

**2908**

Flat wire shelf for slatwall and slatgrid of 3/16" wire, 14"W x 20"L.

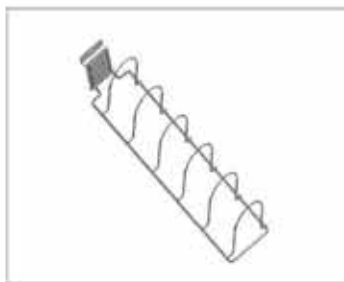
**2909**

Hat display with 4" ring, 6"L x 6"H.

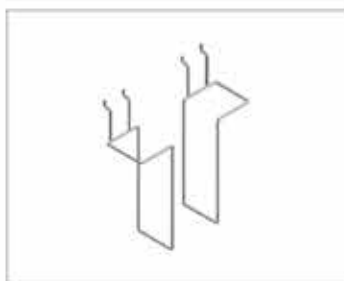
**2910**

Cap merchandiser, holds six caps.



**2911**

Clutch bag display, 5"W x 18"L.

**2912**

Adjustable literature holder, 6" high (sold in pairs).

**2919**

Slant front basket, 12"W x 12"L x 8"H.

**2920**

Small basket, 12"W x 12"L x 8"H.

**2921**

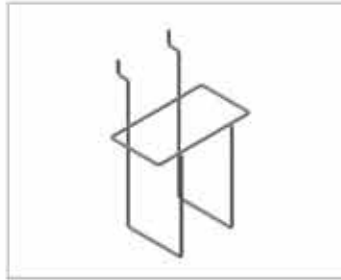
Small basket, 12"W x 12"L x 4"H.

2922

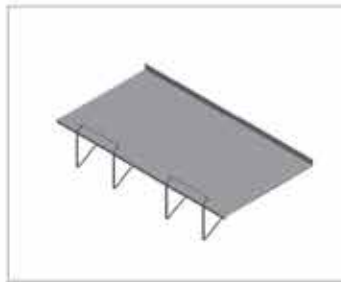
Scarecrow displayer, adjustable from 20-1/2" to 34-3/4".

**2923**

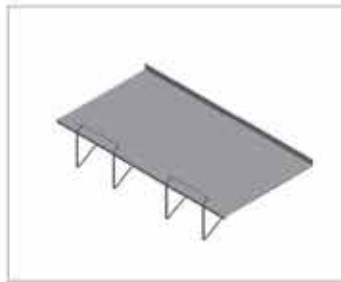
4-1/2"L x 2-1/2"W x 7"H literature holder for slatwall.

**2924**

9-1/2"L x 2-1/2"W x 9"H literature holder for slatwall.

**2932**

Straight 24"L x 12"W metal shelf with 5/8" front lip.

**2933**

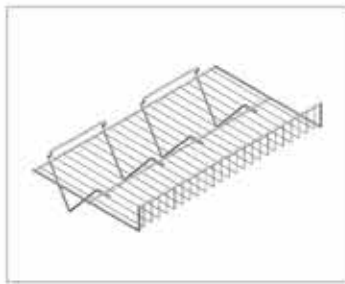
Slant 24"L x 12"W metal shelf with 5/8" front lip.

**2935-24**

6" x 6" video shelf for slatwall, 24" long.

**2935-48**

6" x 6" video shelf for slatwall, 48" long.

**2936**

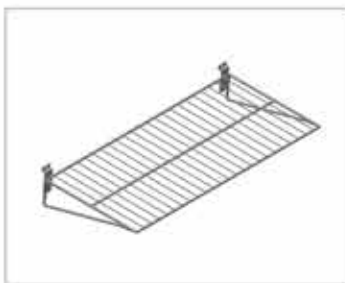
Slant shelf of 1/4" wire. 15"W x 24"L with 3" lip.

**2937**

24"L x 12"W x 4"H wire basket.

**2938**

12"L x 12"W x 3"H slant front basket.

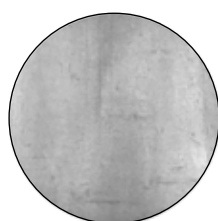
**2939**

24" L X 12"W wire straight shelf.



BINNING CONNECTORS

AVAILABLE FINISHES



RAW METAL



SATIN CHROME



CHROME

NOTE: Special colours are available upon request

3100

Two way connector (fits 3/16" glass).

**3101**

Three way connector (fits 3/16" glass).

**3102**

Four way connector (fits 3/16" glass).

3103

Two way connector, 120 degree (fits 3/16" glass).

**3104**

Three way connector, 120 degree (fits 3/16" glass).

3105

Four way cross binning connector (fits 3/16" glass).

**3106**

Single hinge connector (fits 3/16" glass).

3107

End binning connector (fits 3/16" glass).

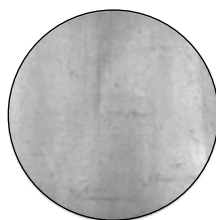
**3108**

Double hinge connector (fits 3/16" glass).



ACRYLIC SIGN HOLDERS

AVAILABLE FINISHES



RAW METAL



SATIN CHROME



CHROME

NOTE: Special colours are available upon request

**3200**

5-1/2"H x 7"W plexi card holder with chrome channel mounted on two 4" stems with 3-1/2" x 5" felt bottom base.

3201

7"H x 11"W plexi card holder with chrome channel mounted on two 4" stems with 3-1/2" x 5" felt bottom base.

**3202**

5-1/2"H x 7"W plexi card holder with chrome channel for 1/4" & 3/8" fittings. For use with clamps, stems and T-stands.

3203

7"H x 11"W plexi card holder with chrome channel for 1/4" & 3/8" fittings. For use with clamps, stems and T-stands.

3230

8-1/2"H x 11"W plexi card holder with chrome channel for 1/4" & 3/8" fittings. For use with clamps, stems and T-stands.

**3223**

11"H x 7"W plexi card holder with chrome channel for 1/4" & 3/8" fittings. For use with clamps, stems and T-stands.

3231

11"H x 8-1/2"W plexi card holder with chrome channel for 1/4" & 3/8" fittings. For use with clamps, stems and T-stands.

3232

14"H x 11"W plexi card holder with chrome channel for 1/4" & 3/8" fittings. For use with clamps, stems and T-stands.

3204

5-1/2"H x 7"W two sided plexi card holder.

3205

7"H x 11"W two sided plexi card holder.

3244

11"W x 8-1/2"H acrylic sign holder, bottom loaded (#3205-811H).

**3206**

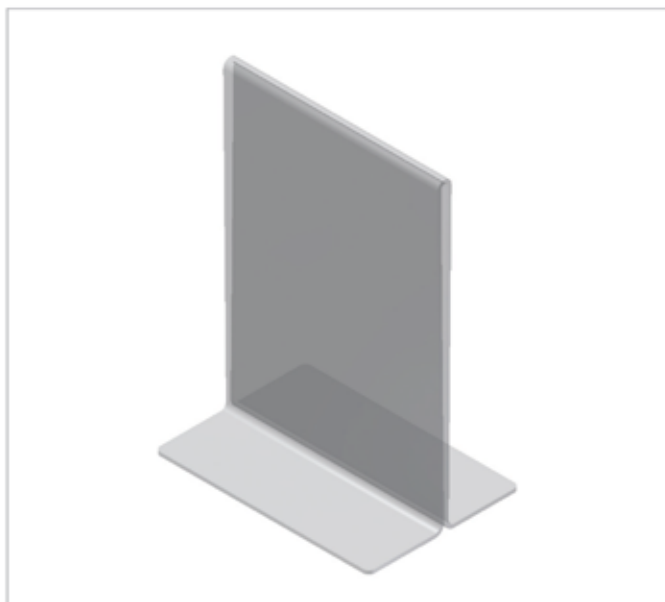
Plexi 7" x 5 1/2" two sided card holder.

3207

Plexi 11" x 7" two sided card holder.

3243

8-1/2"W x 11"H acrylic sign holder, bottom loaded (#3205-811V).

**3208**

5-1/2"H x 7"W top loaded plexi card holder.

3209

7"H x 11"W top loaded plexi card holder.

3227

8-1/2"H x 11"W top loaded plexi card holder.





3224

7"H x 5-1/2"W top loaded plexi card holder.

3225

11"H x 7"W top loaded plexi card holder.

3226

11"H x 8-1/2"W top loaded plexi card holder.



3210

7"H x 5-1/2"W slant plexi card holder.

3211

11"H x 7"W slant plexi card holder.

3228

11"H x 8-1/2"W slant plexi card holder.

3212

5-1/2"H x 7"W slatwall plexi card holder.

3213

7"H x 11"W slatwall plexi card holder.

3214

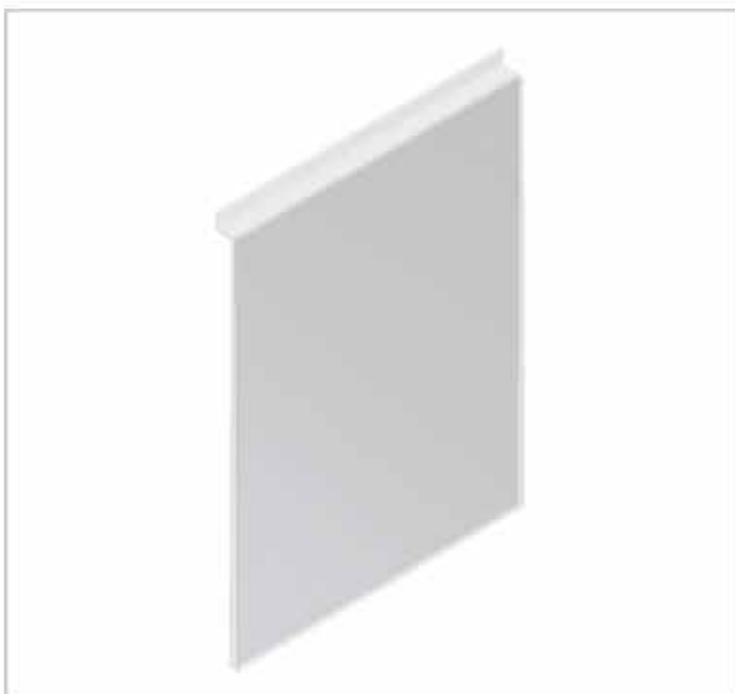
14"H x 11"W slatwall plexi card holder.

**3229**

11"H x 8-1/2"W slatwall plexi card holder.

3242

14"H x 11"W slatwall plexi card holder.

**3215**

5-1/2"H x 7"W grid plexi card holder.

3216

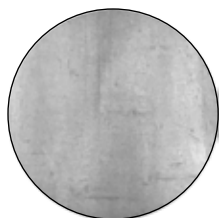
7"H x 11"W grid plexi card holder.





COUNTER TOP DISPLAYERS

AVAILABLE FINISHES



RAW METAL



SATIN CHROME



CHROME



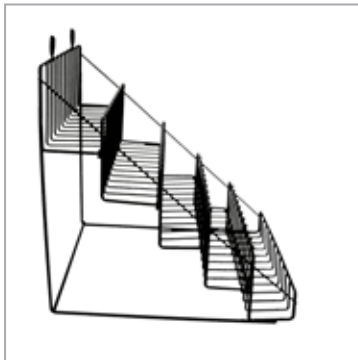
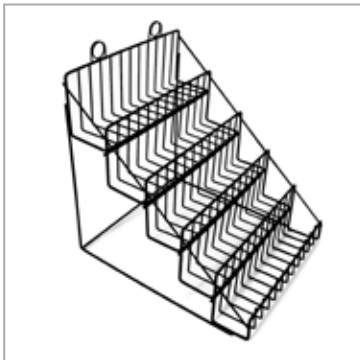
WHITE POWDER COAT



BLACK POWDER COAT

NOTE: Special colours are available upon request

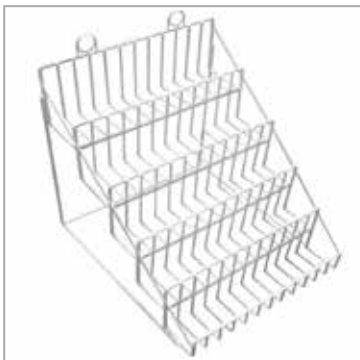
FEATURED COUNTER TOP DISPLAYERS



3120-B

Five-Tier Counter Top Display

12"W X 14-1/2"D X 14"H. Each tier is 3" deep with a 2" front lip



3120-W

Five-Tier Counter Top Display

Same as pictured above but in white.



3360-4

Four-Tier Shelf

Features universal mount design, can be use for magazines, dvd's

Dimensions: 24" L x 24 1/2" H x 12 1/4" D

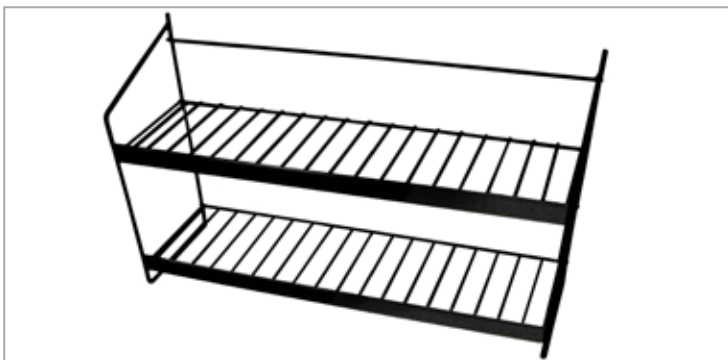
Capacity: 60 CD's or 48 DVD's



14031

Six-Tier 8 1/2" x 11" Paper Rack Display

Holds 8 1/2" x 11" stock up to 100 sheets per tier.. 10" wide by 12" deep x 12" high. Rack is stackable. Shipped assembled.



14037

Long Counter Top Display

Two-Tier wired shelves.

**3409-U**

Inner tubing. 3/8"-27 fitting. Upright, 5/8"-24 fitting (fits 6" & 8" base. 18" adjustable to 36". Base not included).

3410-U

Inner tubing. 3/8"-27 fitting. Upright, 5/8"-24 fitting (fits 6" & 8" base. 24" adjustable to 36". Base not included).

3411-U

Inner tubing. 3/8"-27 fitting. Upright, 5/8"-24 fitting (fits 6" & 8" base. 36" adjustable to 72". Base not included).

3419-U

Inner tubing. 1/4"-20 fitting. Upright, 3/8"-27 fitting (fits 4" & 5" base. 9" adjustable to 18". Base not included).

3420-U

Inner tubing. 1/4"-20 fitting. Upright, 3/8"-27 fitting (fits 4" & 5" base. 12" adjustable to 24". Base not included).

3421-U

Inner tubing. 1/4"-20 fitting. Upright, 3/8"-27 fitting (fits 4" & 5" base. 15" adjustable to 30". Base not included).

**3423**

Round base. 4" base, 3/8"-27.

3424

Round base. 5" base, 3/8"-27.

3425

Round base. 6" base, 5/8"-24.

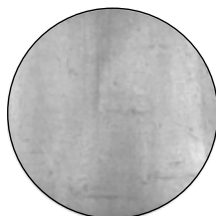
3426

Round base. 8" base, 5/8"-24.



PEGBORD & ACCESSORIES

AVAILABLE FINISHES



RAW METAL



SATIN CHROME



CHROME

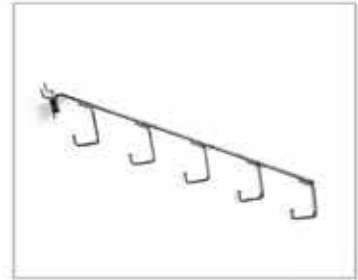
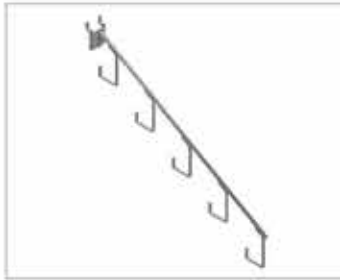
3700

14" waterfall with 6 balls for 1/4" pegboard and slatwall.



3701

16" waterfall with 5 hooks for 1/4" pegboard and slatwall.



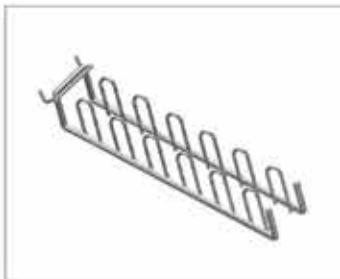
3702

Hat / ball display with 4" ring. 6" high, 6" deep. For 1/4" pegboard and slatwall.



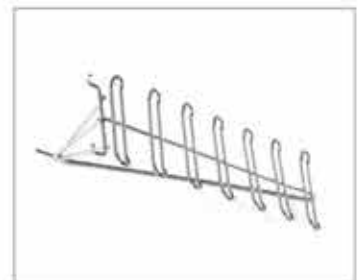
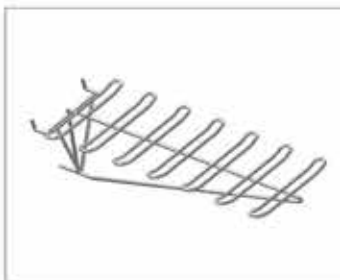
3703

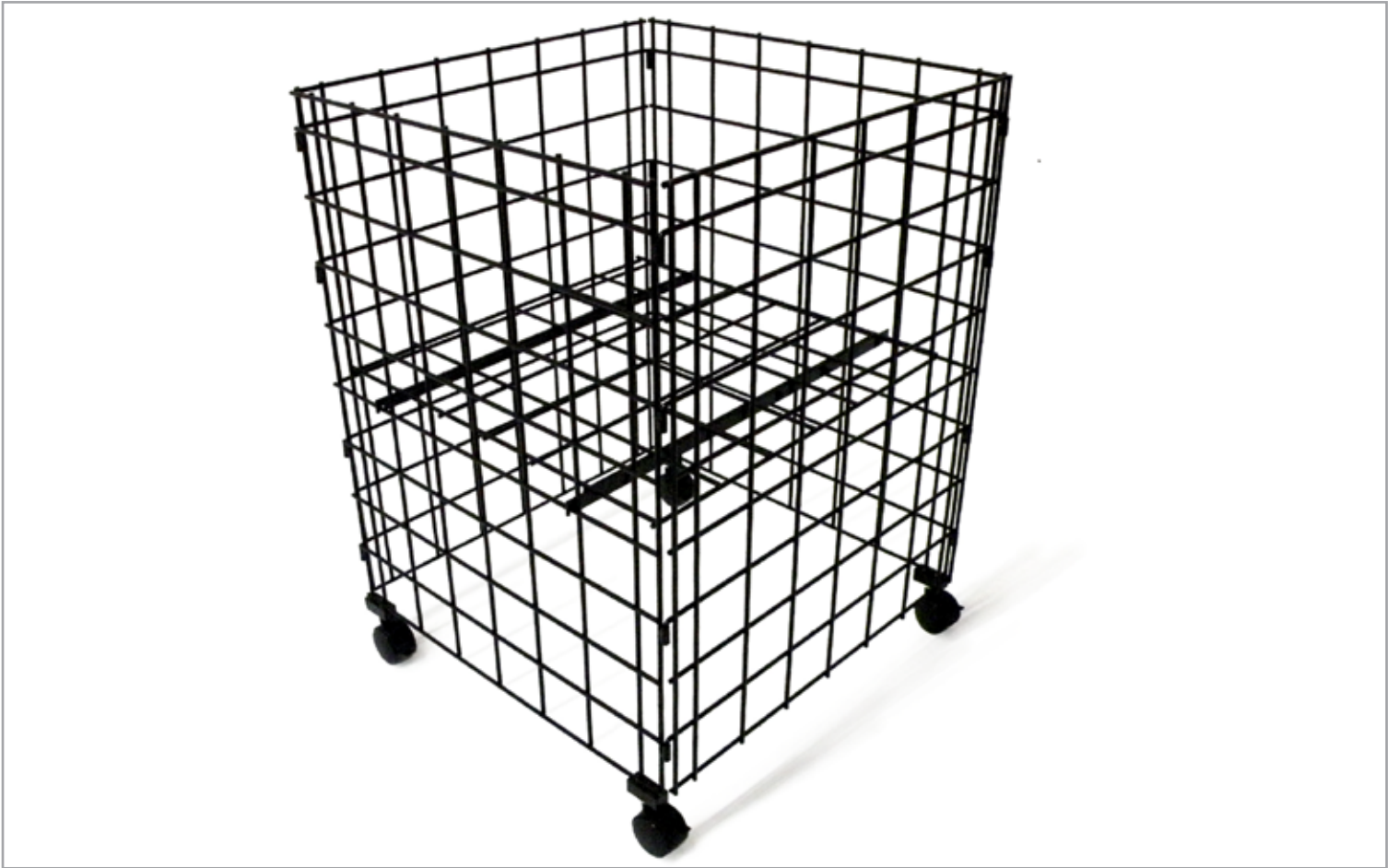
Racquet holder. Holds 6 racquets. For 1/4" pegboard and slatwall.



3704

Bat holder. Holds 10 bats. For 1/4" pegboard and slatwall.





STACKING BASKETS & DUMP BINS

AVAILABLE FINISHES



RAW METAL



SATIN CHROME



CHROME



WHITE POWDER COAT



BLACK POWDER COAT

NOTE: Special colours are available upon request

FEATURED BASKETS & DUMP BINS



9085

Dump Bin on Casters
33"H x 24" SQ



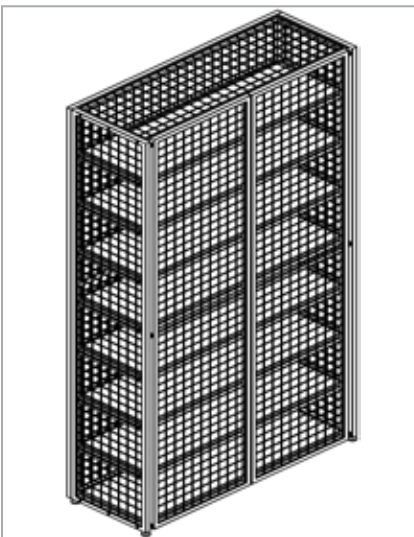
9278

Round Dump Bin
Shelf is adjustable.



10128

24" SQ Dump Bin
Shelf is made of wood and is adjustable



191107

Two Door Double Locking Mesh Rack
96"H x 48"W x 18"D.



3800

Stacking basket, 18"W x 23"L x 10"H.



3801

Divider for stacking basket.



3802

Stacking basket unit. Four baskets high. Each basket is 18"W x 23"L x 10"H. Includes casters.

3803

Mobile merchandiser. 18"W x 23"L x 58"H.
Dividers included. Includes four casters,
two with lock and two without lock.



3805

Rolling dump bin. 48"W x 48"L x 30"H.
Includes four 3" industrial locking wheels.



3806

18"W x 18"L x 33"H folding dump bin.

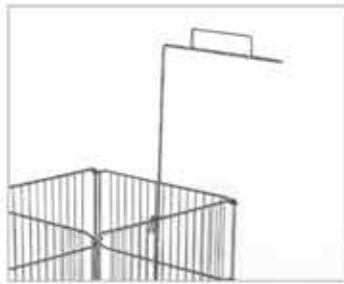
3807

24"W x 24"L x 33"H folding dump bin.

3809

12"W x 12"L x 33"H folding dump bin.





3807-SIGN

24"H sign holder for dump bin.



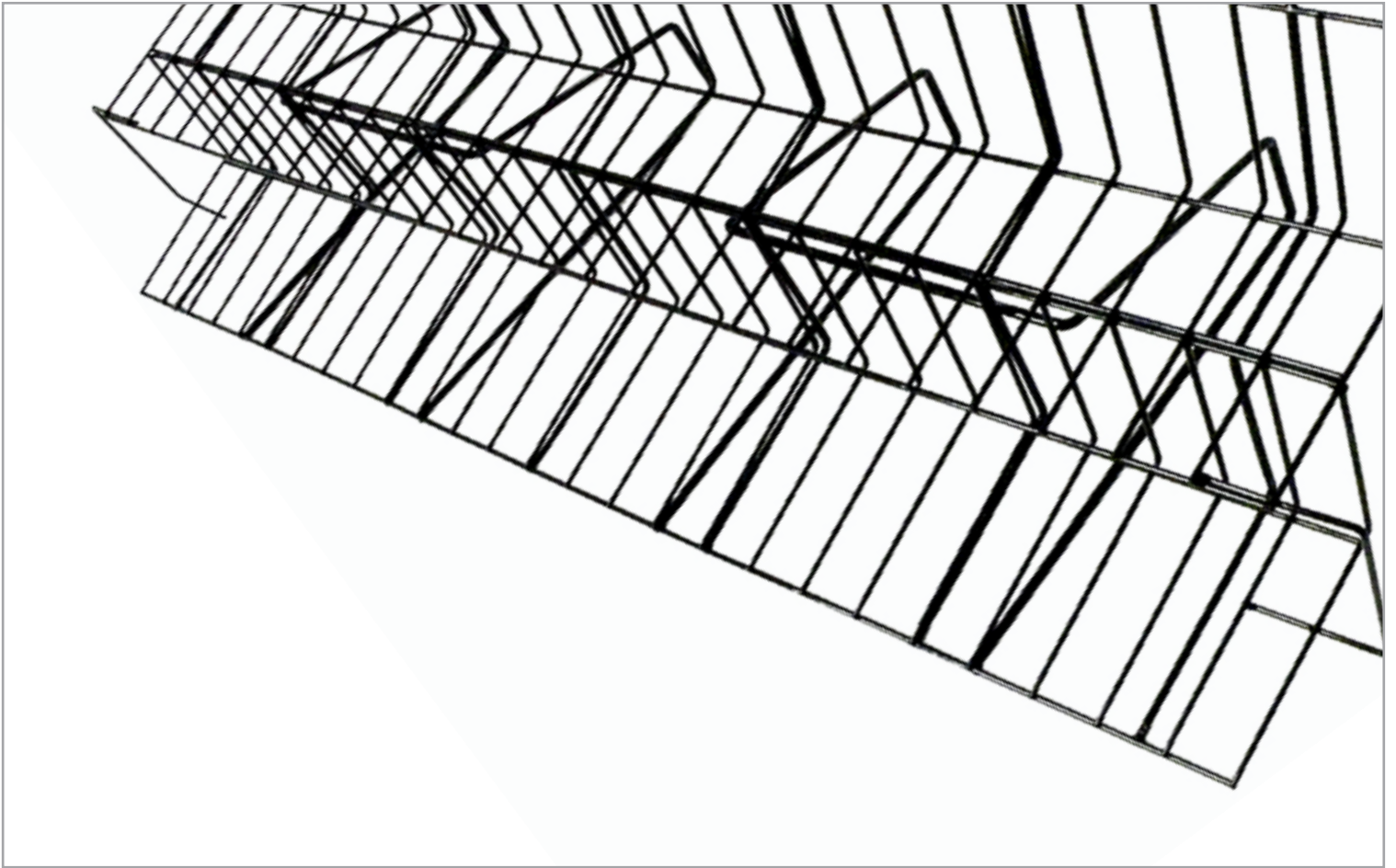
3808

Square dump table. Levelers included.
Available in 36" x 36" and 48" x 48".



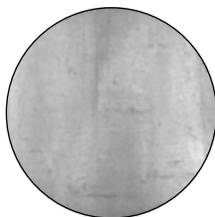
3813

12" x 18" wire stacking basket and add-on kit
for dump bin. 20" high (fits #3806 & #3812
only).



METAL WIRE SHELVING SYSTEM

AVAILABLE FINISHES



RAW METAL



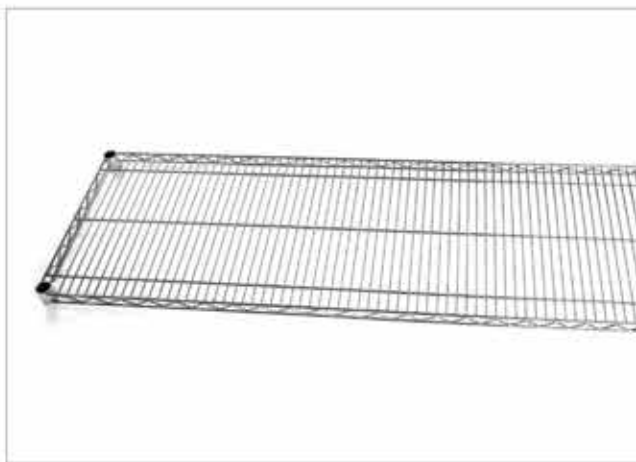
SATIN CHROME



CHROME



Heavy duty metal wire shelf.



Heavy duty metal wire shelf.

Item #	W	L
3900-1836	18	36
3900-1848	18	48
3900-1860	18	60
3900-1872	18	72

Item #	W	L
3902-2424	24	24
3902-2436	24	36
3902-2448	24	48
3917-1436	14	36
3917-1448	14	48
3917-1460	14	60
3917-1472	14	72

**3905**

Wire shelf post. Includes inserts for stem casters or levelers. Available sizes: 34", 54", 62", 74" and 86" (86" available in chrome only).

**3908**

Black plastic split fitting for wire shelves.

**3909**

Black rubber end cap for wire shelf posts.

**3912**

18" quarter round shelf.

**3913**

36" or 48" chrome hangrail.

**3914**

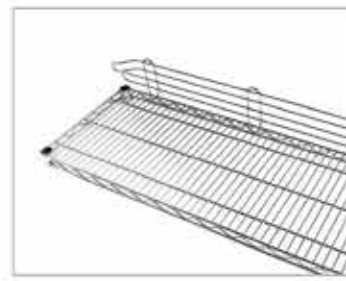
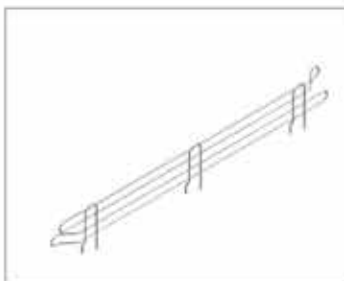
Adjustable leveler.

3915

4" swivel caster with lock.

**3916**

4" swivel caster without lock.

**3932-36**

36" x 4" wire shelf ledge.

3932-48

48" x 4" wire shelf ledge.

**3933**

Joint / connector for wire shelving post.

**3934**

Sheet metal s-clip for wire shelving unit.

**3935**

Acrylic inlay for wire shelf, clear.



HANGERS

AVAILABLE FINISHES



NATURAL



TRADITIONAL



ASHTREE



BEECH



WHITE STAIN

NOTE: Special colours are available upon request

FEATURED HANGERS

KS-WH-101

17" Flat Top Wooden Shirt Hanger

KS-WH-102

17" Flat Top Natural Wood Finish Curved Arm Wooden Shirt Hanger

KS-WH-103

17" Wooden Traditional Finish Hanger with Velvet Tipped Arms and Pants Clip

KS-WH-104

17" Ashtree Coat Hanger with Rubber Antislip Strip

KS-WH-105

Wooden Natural Finish Coat Hanger with Black Felt Tipped Arms and Notched Shoulders.

KS-WH-106

Wooden Natural Finish Coat Hanger with Black Felt Tipped Arms, Notched Shoulders, and Felted Trouser Bar.

FEATURED HANGERS



KS-WH-305/201

17" White Stain Finish Traditional Shirt and Trouser
Wooden Hanger 2 Pack Combo



KS-WH-306/202

17" Raw Finish Traditional Shirt and Trouser Wooden
Hanger 2 Pack Combo



KS-WH-203

17" Beech Wood, Single Track Bar, Dual Clip Trouser Hanger



KS-WH-204

9.75" Wooden Nonslip Trouser Clip Function Hanger with
Rubberized Clasps



KS-WH-205

Wooden Trouser Dual Clip Hanger with Capped Single
Clip Track



KS-WH-206

Wooden Trouser Dual Clip Hanger with Looped Rounded
Clip Track



4002

16" dress / blouse hanger with loop hook.



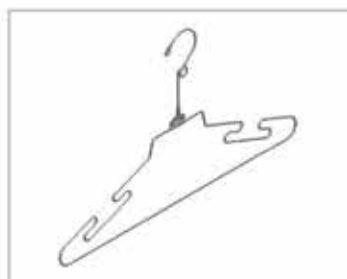
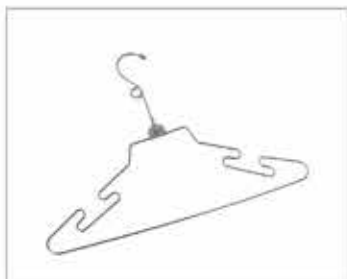
4003

16" suit hanger with loop hook.



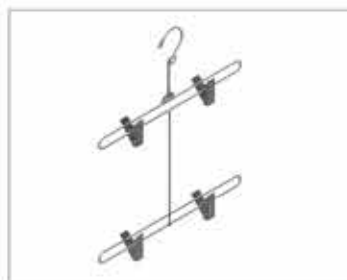
4004

12" skirt hanger with swivel hook.



4006

16" lingerie hanger with loop hook.



4007

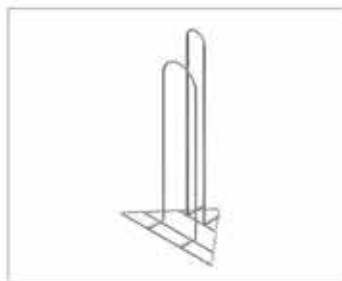
12" bikini hanger with swivel hook.

4009

14" pants hanger with rubber sleeve.

**4011**

Hanger stacker. Holds up to 100 hangers.

**4012**

60" hanger retriever with wooden handle.

**99-SAL-001**

30"W x 60"H hanger rack.





WIRE BASKETS & SHELVES

AVAILABLE FINISHES



RAW METAL



SATIN CHROME



CHROME



Wire basket with 1/4" wire frame.

Item #	W	L
4600-14	14	48
4601-16	16	48
4602-18	18	48
4633-12	12	48
4628-14	14	36
4628-16	16	36
4628-18	18	36



4603-14

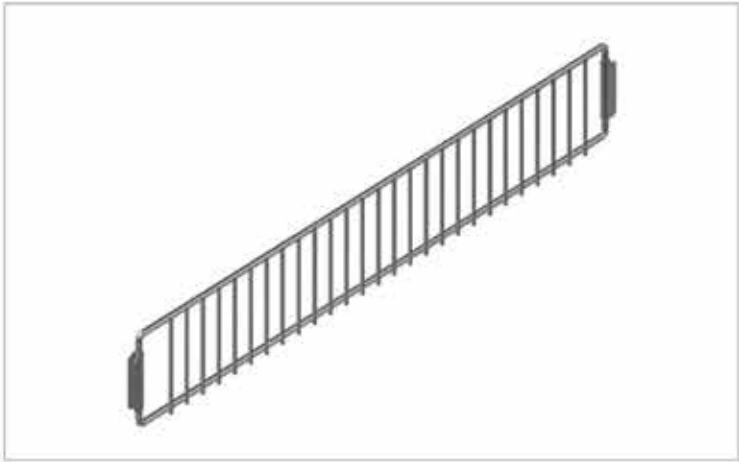
14" wire basket divider.

4604-16

16" wire basket divider.

4605-18

18" wire basket divider.



4609-14

14" wire shelf divider.

4610-16

16" wire shelf divider.

4611-18

18" wire shelf divider.

4612-10

10" wire divider for metal shelf.

4613-12

12" wire divider for metal shelf.

4614-14

14" wire divider for metal shelf.

4615-16

16" wire divider for metal shelf.

4616-18

18" wire divider for metal shelf.

4617-20

20" wire divider for metal shelf.

4618-22

22" wire divider for metal shelf.

4619-30

30" wire fencing for metal shelf and end deck.

4620-36

36" wire fencing for metal shelf and end deck.

4621-48

48" wire fencing for metal shelf and end deck.

4622

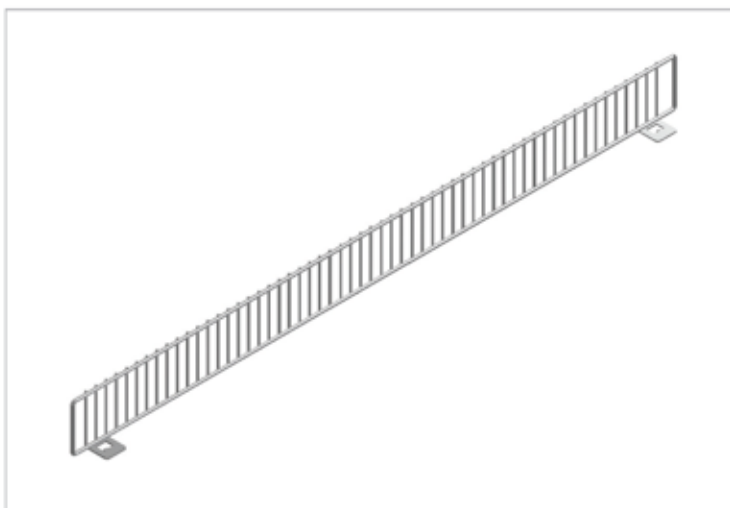
Adjustable bracket for basket. Rotation 0, 15 & 30 degree. Available sizes: 12" and 16" (sold in pairs).

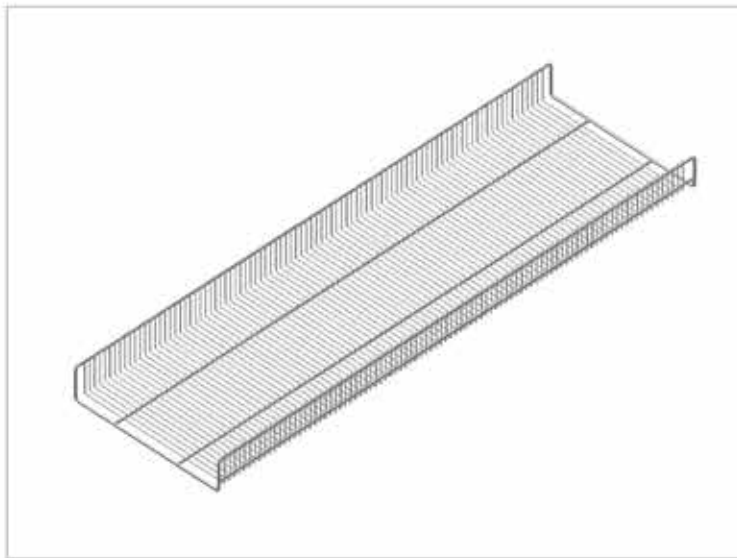
4626-12

12"L non-adjustable bracket for basket.

4626-16

16"L non-adjustable bracket for basket.





4606-14

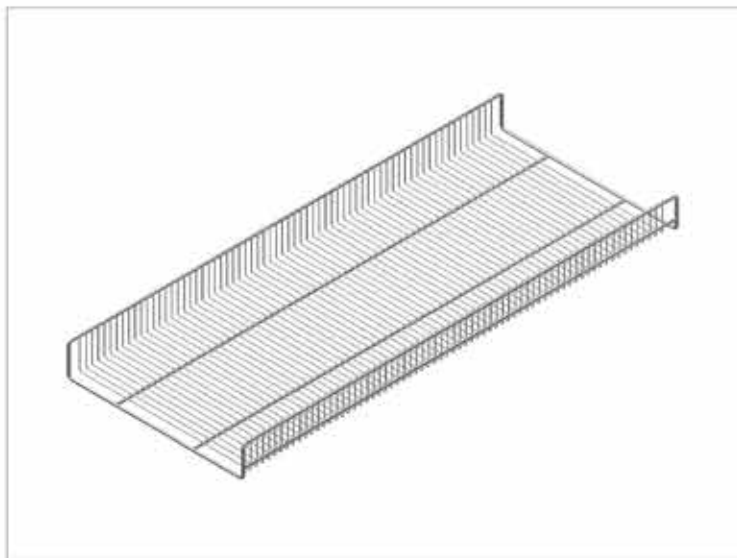
14"W x 48"L wire shelf.

4607-16

16"W x 48"L wire shelf.

4608-18

18"W x 48"L wire shelf.



4630-14

14"W x 36"L wire shelf.

4630-16

16"W x 36"L wire shelf.

4630-18

18"W x 36"L wire shelf.



CARTS

AVAILABLE COLORS:



NOTE: Special colours are available upon request

**E68**

4,150 CU inch / 68 Liter
total payload capacity

**P130**

Aisle Rider
129 Liter Capacity

**P175**

Store Cruiser Plastic Trolley.
164 liters capacity.

**P220**

Trolley designed for large
stores. 200 liters capacity.

P40

Rainbow Junior Cart for Child Use
Total payload capacity: 2,440 Cu
Inch / 40 Liter.



P40

Plastic Hybrid Fast Cart with Child
Capsule - Family
Total payload capacity: 3,540 Cu
Inch / 58 Liter.
Top Basket Capacity: 2,440 Cu
Inch / 40 Liter.



P80

Plastic Hybrid Fast Cart
Total payload capacity: 4,880 Cu
Inch / 80 Liter.



MIDO 2

Convenience Store Cart for Two
Plastic Hand Baskets.
Total Payload Capacity: 2,684 Cu
Inch / 44 Liter.



**TB145**

USA-Style Cart
Total payload capacity: 15,360 Cu
Inch / 252 Liter.

**TB190**

USA-Style Cart
Total payload capacity: 15,570 Cu
Inch / 255 Liter.

TB200

USA-Style Cart
Total payload capacity: 23,130 Cu
Inch / 380 Liter.

**C-70TB**

Shallow Shopping Cart
Total payload capacity: 4,270 Cu
Inch / 70 Liter.

BT150

Shopping Cart w/ Lower Storage
Total payload capacity: 13,420 Cu
Inch / 220 Liter.

**EZ210 SEC-T**

Standard Shopping Cart
Total payload capacity: 12,810 Cu
Inch / 210 Liter.

MIDO 3

Convenience Store Cart for Three
Reusable Bags
Total payload capacity: 4,026 Cu
Inch / 66 Liter.



P160 US

Plastic Hybrid Shopping Cart w/
Lower Storage Tray
Total payload capacity: 9,763 Cu
Inch / 160 Liter.



P210 US

Plastic Hybrid Shopping Cart w/
Lower Storage Tray
Total payload capacity: 12,815 Cu
Inch / 210 Liter.



Emotion 220

Plastic Hybrid Shopping Cart
Total payload capacity: 14,640 Cu
Inch / 240 Liter.

Emotion 240

Plastic Hybrid Shopping Cart
Total payload capacity: 15,860 Cu
Inch / 260 Liter.



P100

Plastic Hybrid Shopping Cart w/
Lower Storage Tray
Total payload capacity: 9,763 Cu
Inch / 160 Liter.

P180

Plastic Hybrid Shopping Cart w/
Lower Storage Tray
Total payload capacity: 14,650 Cu
Inch / 240 Liter.



P180 US

Plastic Hybrid Cart w/ USA-Style
Chassis
Total payload capacity: 14,650 Cu
Inch / 240 Liter.

APPAREL CART

Total payload capacity: 12,200 Cu
Inch / 200 Liter. Top basket payload
capacity: 6,710 Cu Inch / 110 Liter.
Total Load: 440 lb/200 kg loading.

**STARLIGHT II**

Aluminum Airport Cart

Total load: 440 lb / 200 kg loading.

**STAINLESS 4**

Stainless Steel Airport Cart

Total load: 726 lb / 300 kg loading.

**KID CADDIE**

Fun Shopping Cart for Family Use

Total payload capacity: 6,710 Cu
Inch / 110 Liter.**CASH & COIN**

Cash & Coin Transport Cart

Total payload capacity: 12,200 Cu
Inch / 200 Liter. Total Load: 440 lb /
200 kg loading.**PM**

Nestable Flatbed Cart

Total load: 440 lb / 200 kg loading.

**4 SIDED ROLL CAGE**Total payload capacity: 54,900 Cu
Inch / 900 Liter. Total Load: 1,100 lb /
500 kg loading.



LOCKERS

**LK230**

Standard KD Locker
3 panel door - 2 stacked on left & one full length on the right.

LK200

2 stacked doors

LK300

3 stacked doors

W	D	H	TIER
12	12	60	1,2,3
12	12	72	1,2,3
12	15	60	1,2,3
12	15	72	1,2,3
12	18	60	1,2,3
12	18	72	1,2,3
15	15	60	1,2,3
15	15	72	1,2,3
15	18	60	1,2,3
15	18	72	1,2,3
18	18	60	1,2,3
18	18	72	1,2,3
18	24	60	1,2,3
18	24	72	1,2,3
24	24	60	1,2,3
24	24	72	1,2,3

**LK1200**

12 small staked doors

LK400

4 stacked doors

LK 500

5 stacked doors

W	D	H	TIER
12	12	60	4,5
12	12	72	4,6
12	15	60	4,5
12	15	72	4,6
12	18	60	4,5
12	18	72	4,6
15	15	60	4,5
15	15	72	4,6
15	18	60	4,5
15	18	72	4,6
18	18	60	4,5
18	18	72	4,6
18	24	60	4,5
18	24	72	4,6

NOTE: Available handle & locking mechanism options can be found in the back of this section [page 131]

LK2000

Large duplex locker.

LK2002

Large all welded locker



LK2000-M

Angle framed locker. Full mesh with handles.

LK1000-S

Stadium Locker. Small locking locker and cubby on top shelf. Metal hang bar. Mesh side paneling. Seating area on the bottom doubles as chest door locker.



**LK-PC6**

PC Door Locker. Six stacked see-through doors.

**LK-PC18**

PC Door Locker. 18 stacked see-through doors.

**LK-PC3**

PC Door Locker. 3 stacked partially see-through doors.

**LK0016**

16 Person Locker. Six stacked doors with four lined up above with metal hang rack.



OPTION 1

Metal hasp for padlock entry (Padlock not included)



OPTION 2

Drop down hasp for padlock entry.
(Padlock not included)

OPTION 3

Integrated combination lock entry



OPTION 4

Locking mechanism for key entry



FOLDING WARDROBES

AVAILABLE FINISHES

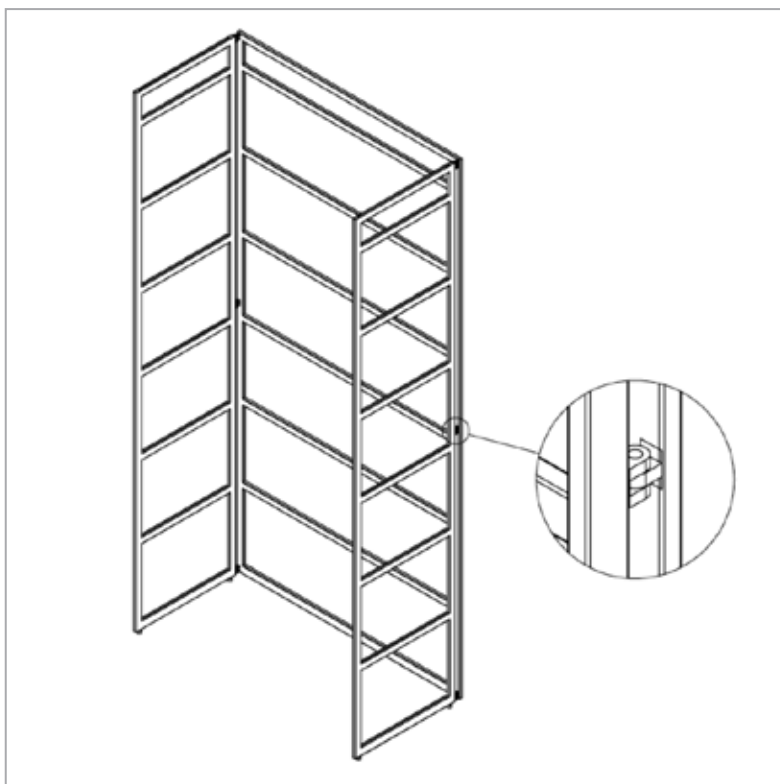


WHITE POWDER COAT

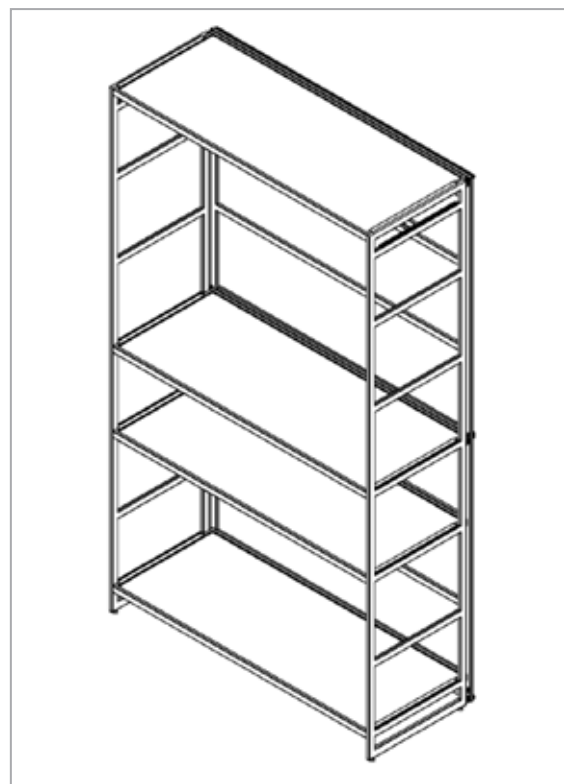


BLACK POWDER COAT

NOTE: Special colours are available upon request

**WR - 101**

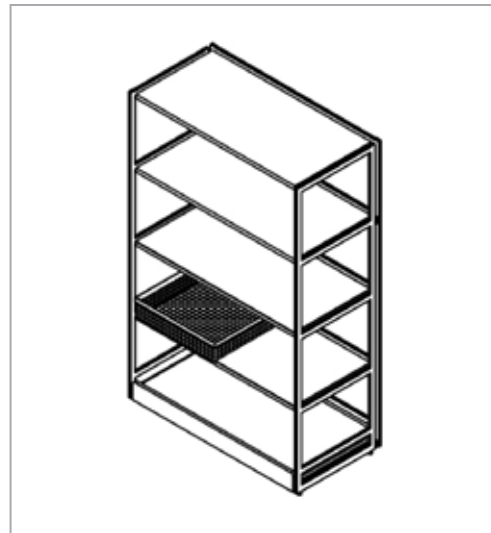
Basic single foldable / adjustable unit.

**WR - 103**

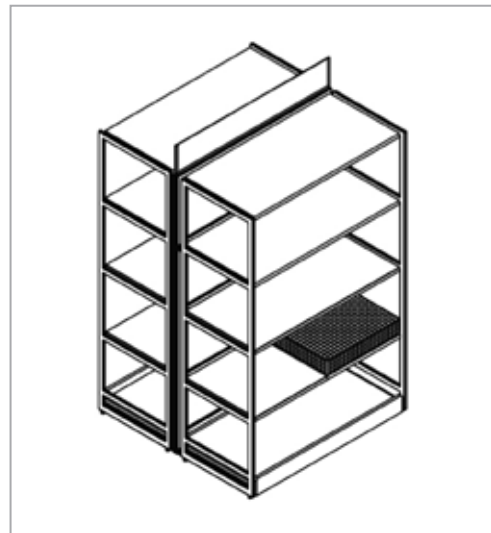
Basic single foldable unit, with adjustable solid shelves, and a top bar hanging rack.

WR - 105

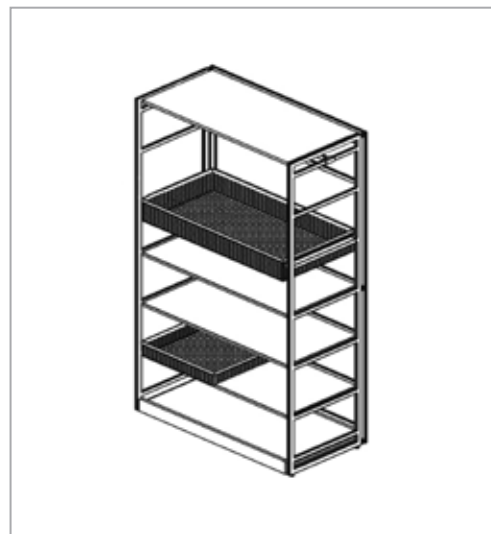
Basic single foldable unit, with adjustable solid shelves, and a half metal mesh basket shelf.

**WR - 107**

Basic double foldable units, with adjustable solid shelves, and a half metal mesh basket shelf. Units are displayed facing back to back with signage.

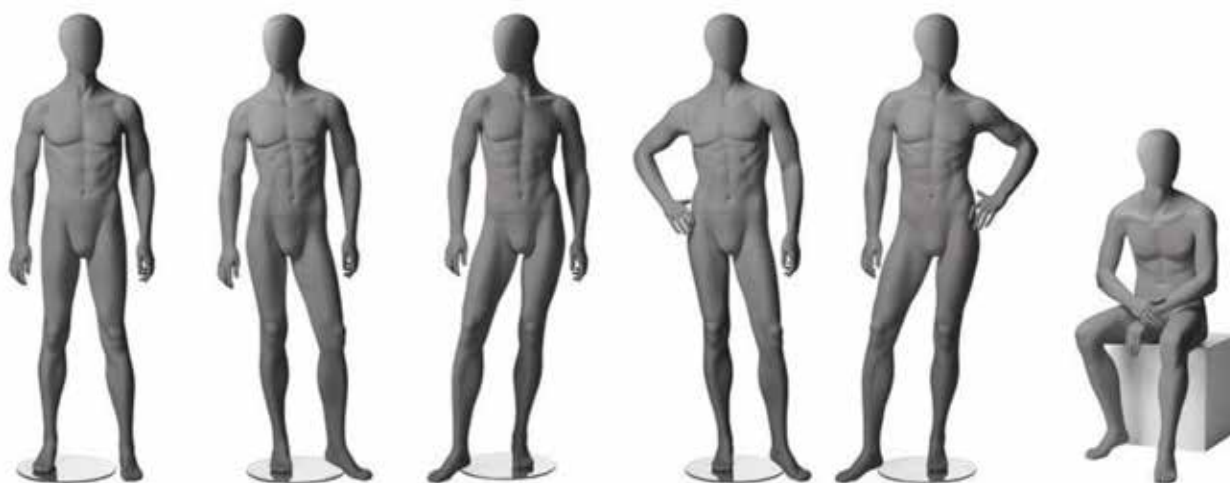
**WR - 103**

Basic single foldable unit, with adjustable solid shelves, a half metal mesh basket shelf, a full metal mesh basket shelf, and a top bar hanging rack.

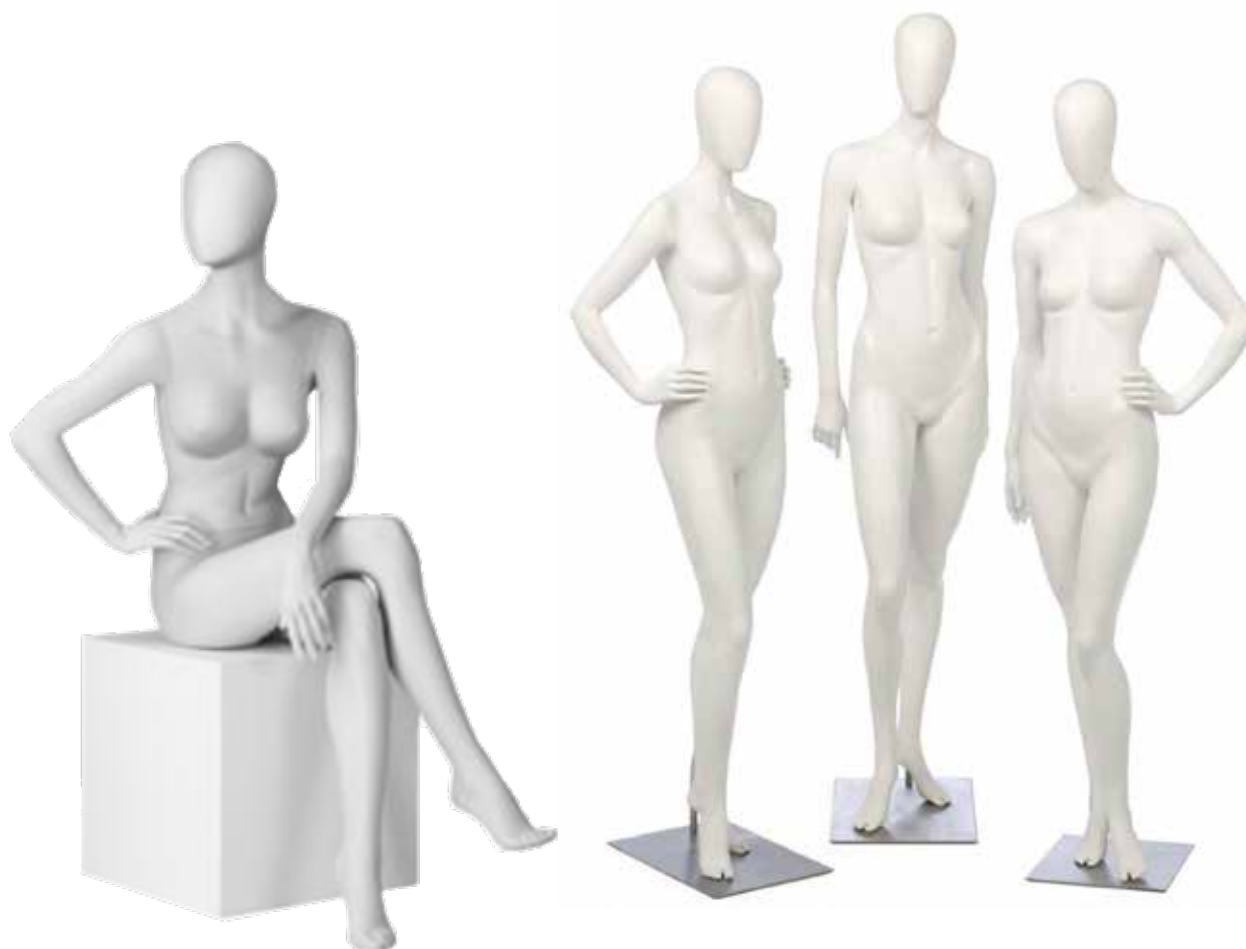




MANNEQUINS

**M1010****M1011****M1012****M1013****M1014****M1015**

Height: 188cm, breast: 94cm, waist: 76cm, hip: 95cm, shoe size: 42-43, heel height: 2-3cm

**F2015****F1011****F1012****F1013**

**K2010****K2011****K2012****K2013****K2014****K2015**

Item	B	W	H	Shoulder
DM-5	81	58	86	37.6
DM-7	84	61	88	38
DM-9	87	64	90	38.4

**F3010****F3011****F3012****F3013****F3014****F3015**

Height: 186cm, breast: 85.5cm, waist: 64.5cm, hip: 90.5cm, shoe size: 38, heel height: 8-9cm

**P0A1****P0A3****P0B1****R30022**

Running female mannequin with base and attached support bar.

R30011

Running male mannequin with base and attached support bar.





CUSTOM PROJECTS











TASMAN GROUP PR, INC.

15304 Spring Ave
Sante Fe Springs, CA 90670

Hours of Operation: M - F 8am - 4:30pm
Phone: 562.566.1337 Fax: 562.404.0716
www.tasmangrouppr.com

Still have questions? Email us at:
sales@tasmangrouppr.com

TASMAN GROUP, INC.

(Australian Head Office)

62 – 74 Sheehan Road
West Heidelberg VIC
Australia 3081

Phone: +613 9459 6944
sales@tasmangroup.com.au

TERMS AND CONDITIONS

Sales Policy

Tasman Group PR is a supplier to distributors and wholesalers of retail fixtures.
We also manufacture custom retail fixtures & displays for national chain accounts.

Shipping Policy

Unless otherwise specified, all LTL (truck) shipments will be arranged through or freight agents.
Freight will be prepaid and added to the merchandise invoice. Small package orders will ship via UPS.
We can ship Fedex ground as long as the customer provides us with the labels.

Return Policy

All returns are required to have written approval from Tasman Group PR, prior to return.
All returns must be in the original packaging and be made within 30 days of receipt.
Returns must be shipped back at customers expense and are subject to a restocking fee.
Upon inspection, all returns will be in the form of credit towards the customers account.

Claims Policy

Claims for damaged goods or shortages must be noted on receipt at the time of delivery.
For LTL shipments, damages or shortages must be noted on the BOL. Claims for damages & shortages must be reported to Tasman Group within 5 days of receipt of goods, otherwise Tasman Group will not be responsible for any freight charges for replacements.
*** Note for showcases, or any glass shipments. These items are inspected and packed properly by our facility prior to shipping. Once you receive this shipment – it must be thoroughly inspected that nothing is broken prior to receiving as we will not be responsible once the trucking co. leaves the shipment with you.
Filing damage claims with UPS & LTL are the customers responsibility, if the billing account used belongs to the customer.

Pricing & Payment Policy

Prices are subject to change without notice.
Major credit cards are accepted for prepayment of orders, there will be a 3% credit card fee for this.

Disclaimer

Intellectual property of Tasman Group cannot be changed or reproduced in any form, without written permission.